

# Student Pathways and Labour Market Outcomes: Evidence from Tax-Linked Administrative Data

Ross Finnie ([rfinnie@uottawa.ca](mailto:rfinnie@uottawa.ca))





# The Question and Approach

# The Project

- Pathways through PSE
  - What are they?
  - Associated labour market outcomes?
- Challenging problem
  - Almost infinite pathways
  - Need to identify and classify
  - Then link to labour market outcomes
- Need to develop tractable analytical framework + find data

# Our Approach

- Build off previous work on graduates' earnings
  - Linked PSE admin. data to tax records
  - 14 colleges and universities across the country
- Here – use APPTYPE variable some institutions provided
  - Direct from high school
  - Transfer
  - Mature student
  - Other/unknown
- Link these to earnings

# Immediate Challenges

- APPTYPE variable questionable
  - Direct entry (DE) looks generally good (at least after a while)
  - Others questionable
  - And different across institutions
- Important lesson for using admin data generally
- Work around it – in this case (but see more below)
  1. DE vs. all others
  2. Also use age at entry ( $\leq 23$ ,  $\leq 24$ )

# Analysis

1. Post-graduation earnings – track over time by APPTYPE
  - Simple descriptive analysis
  - Regression analysis
2. Pre/Post-Graduation Earnings
  - Getting at “value added”

# Data

Graduates 2005-2012



Linked to tax data

**97% linkage rate**

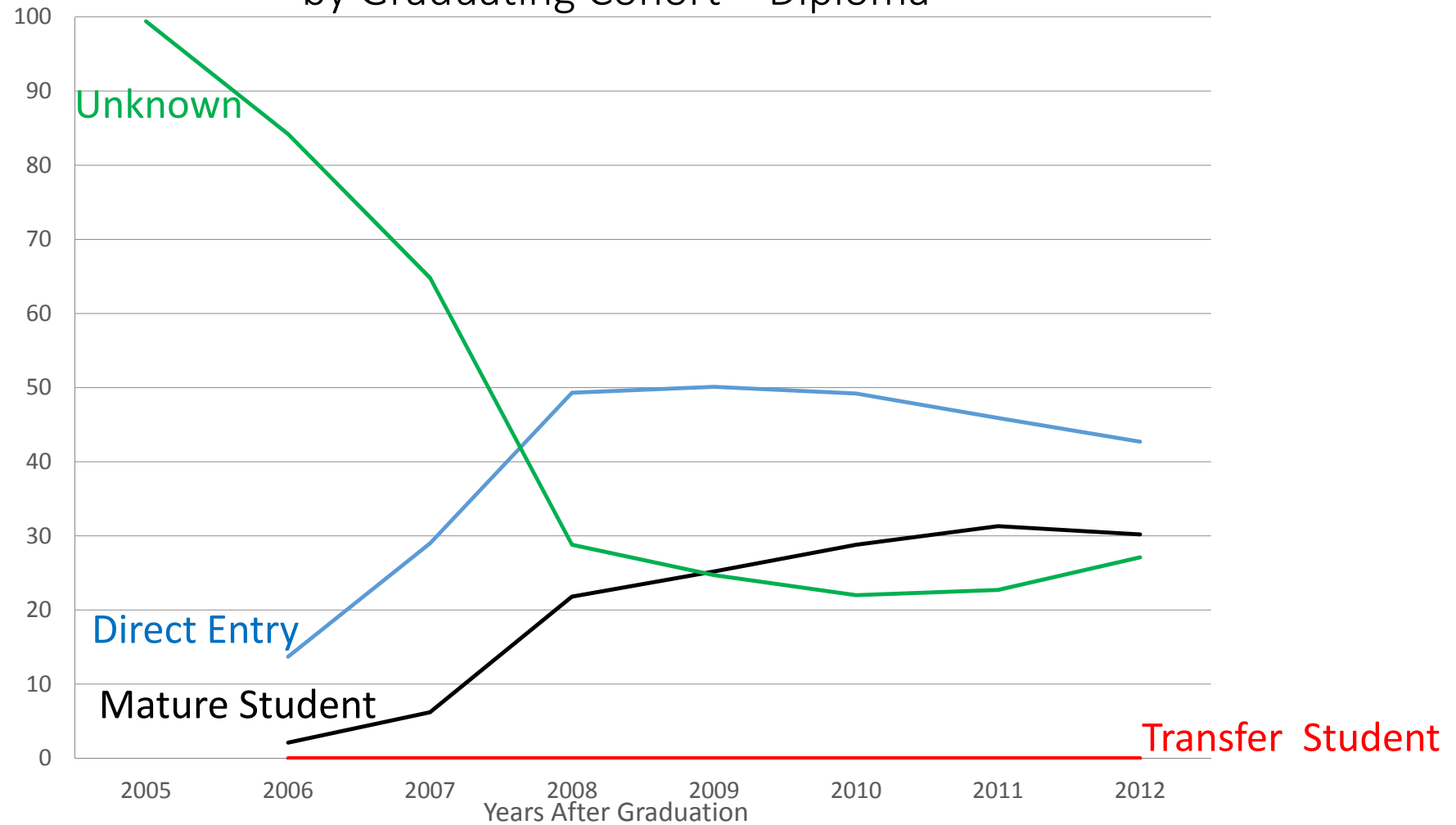


?

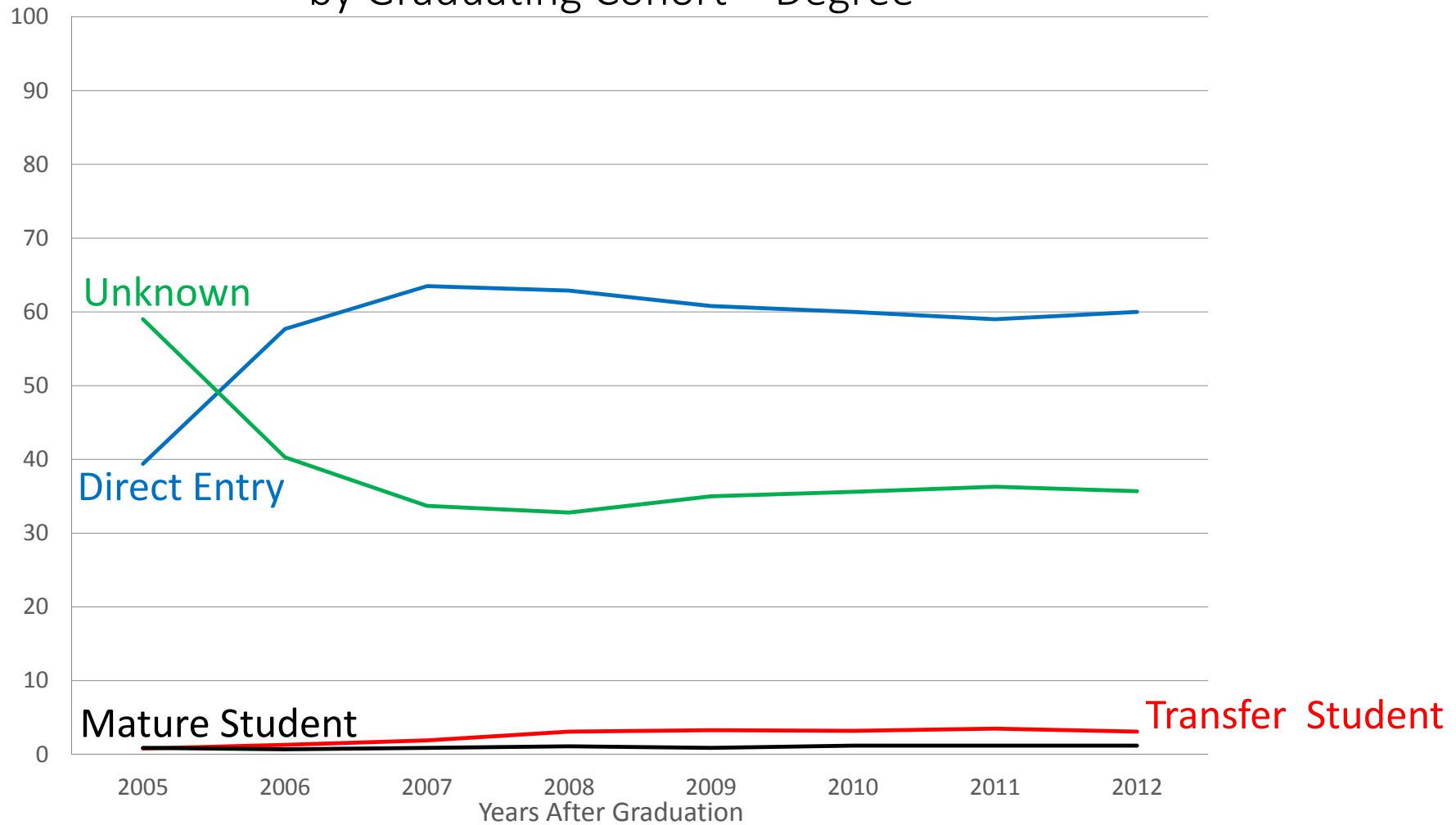
# The Analysis

APPTYPE

Distribution (%) of Applicant Type  
by Graduating Cohort – Diploma

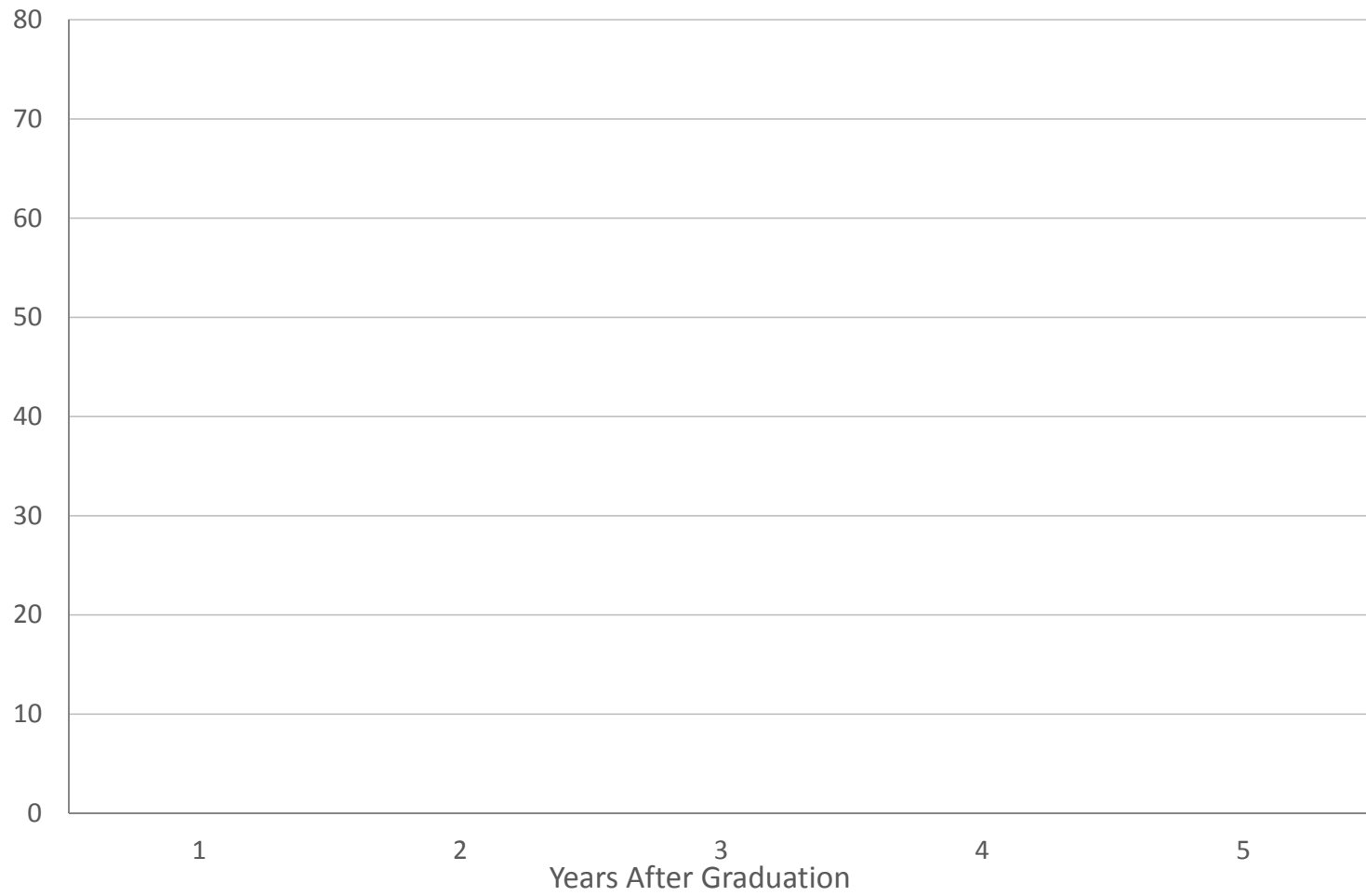


Distribution (%) of Applicant Type  
by Graduating Cohort – Degree

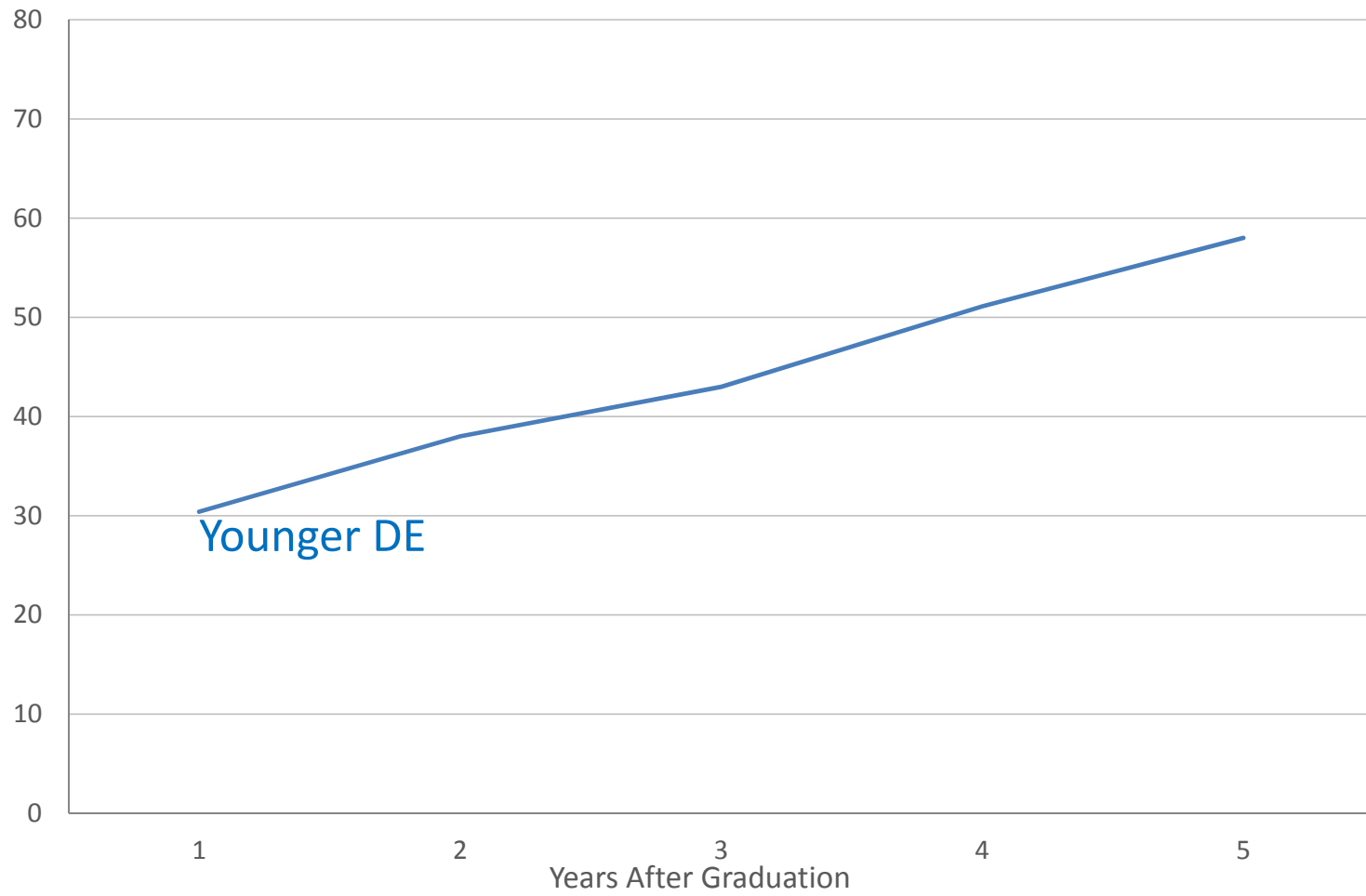


# Mean Earnings of Diploma Graduates (\$2014)

## 2008 Cohort

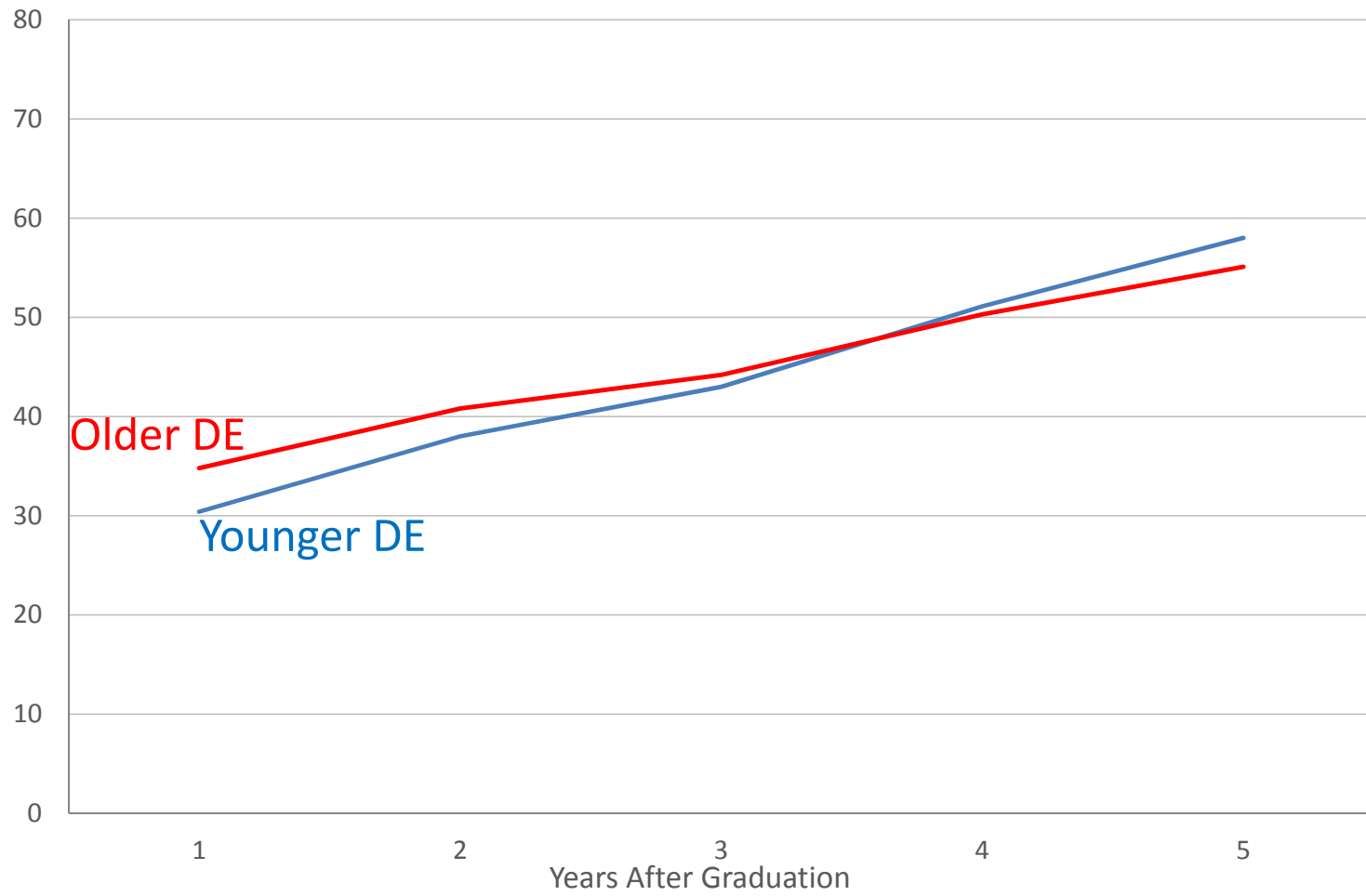


## 2008 Cohort

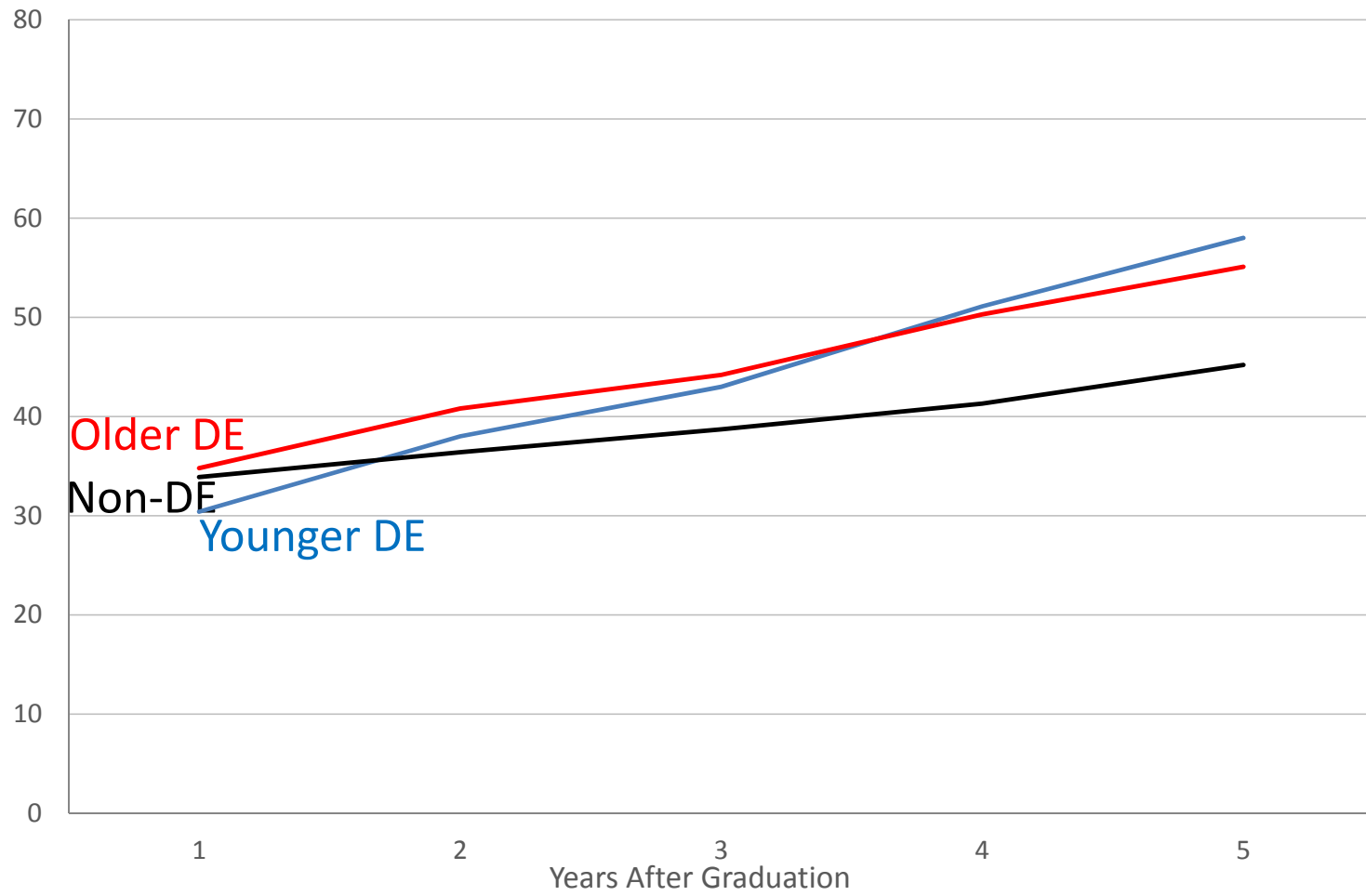




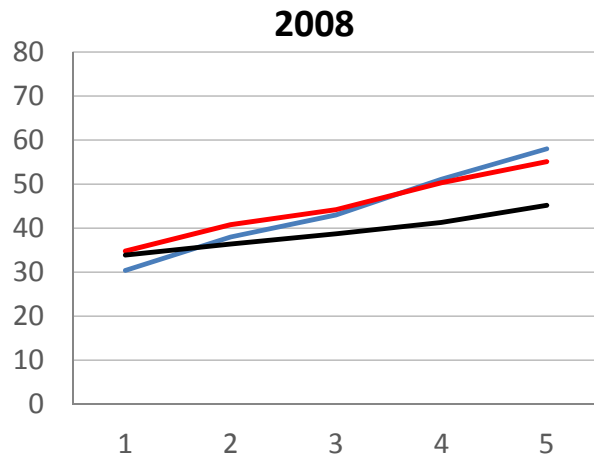
## 2008 Cohort



## 2008 Cohort



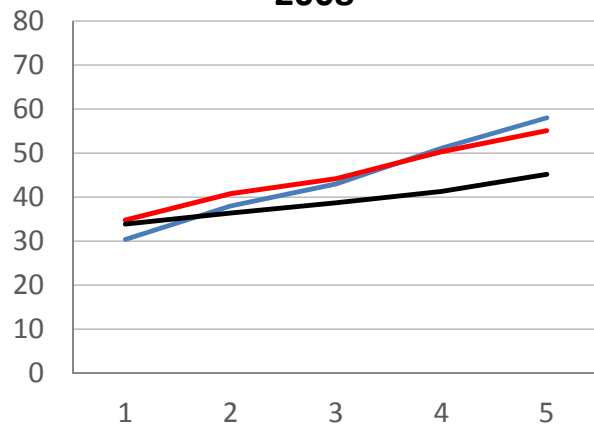
## All Cohorts



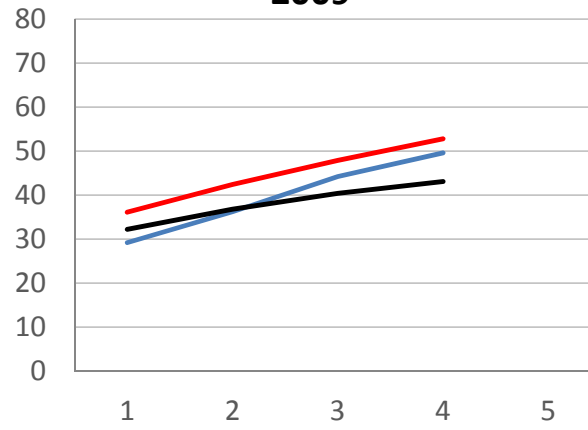
Older DE  
Younger DE  
Non-DE

## All Cohorts

2008



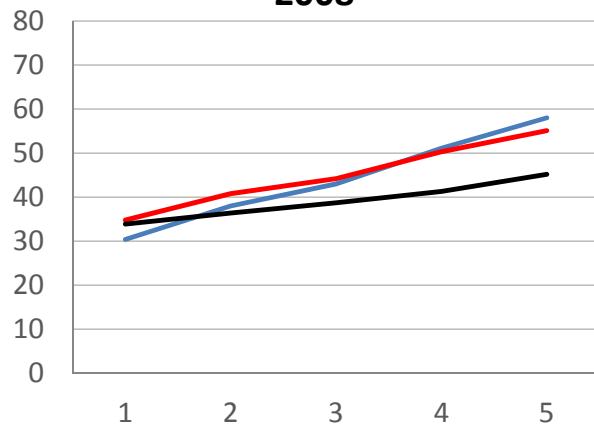
2009



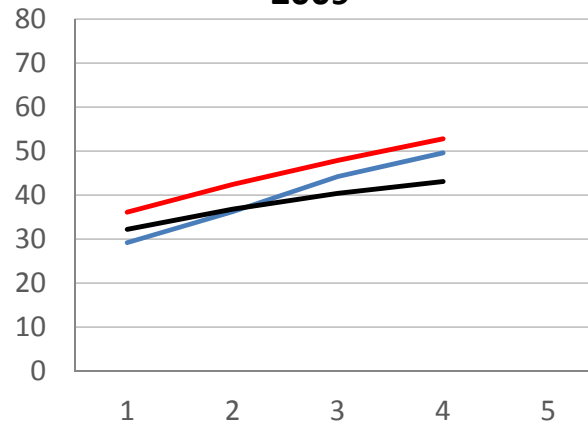
Older DE  
Younger DE  
Non-DE

## All Cohorts

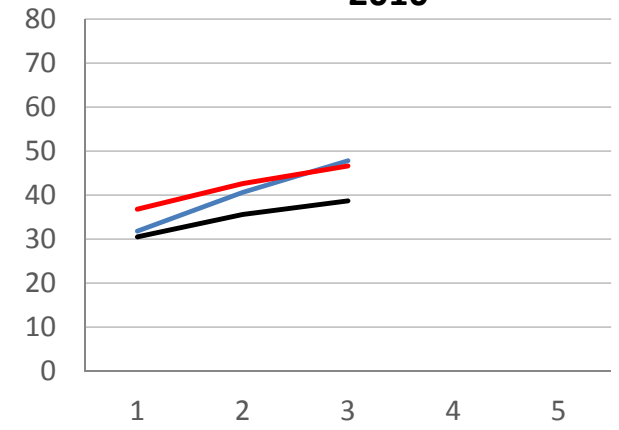
2008



2009



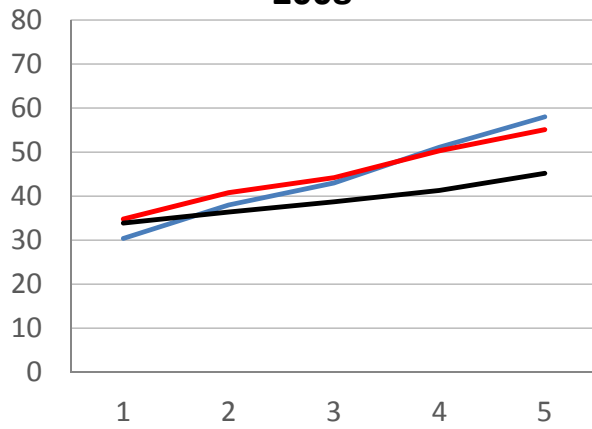
2010



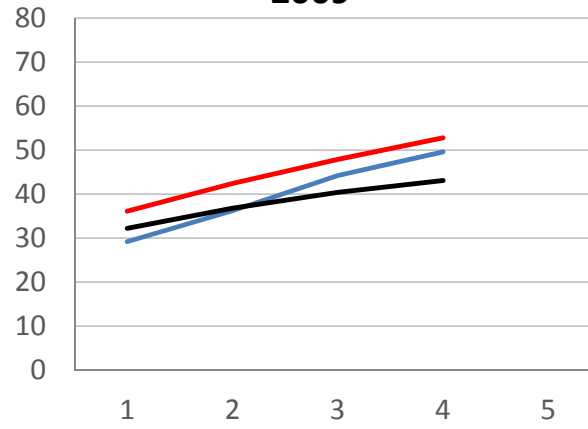
Older DE  
Younger DE  
Non-DE

## All Cohorts

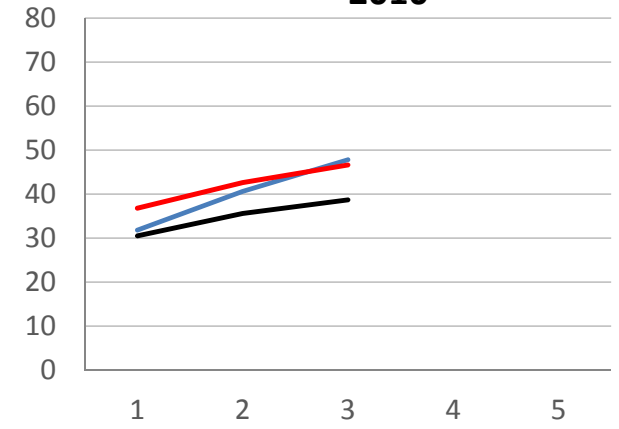
2008



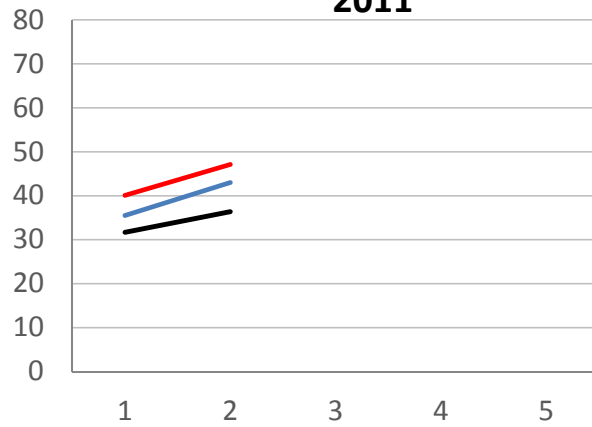
2009



2010



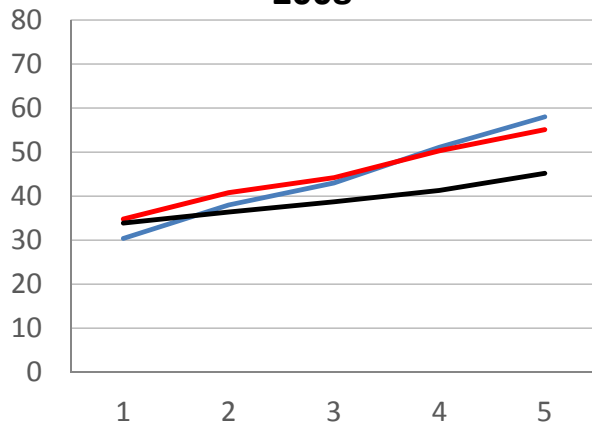
2011



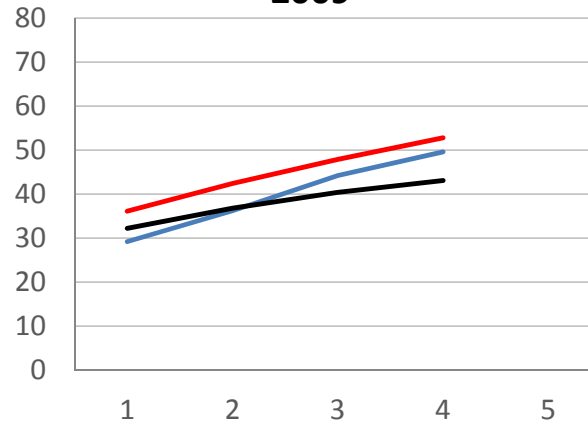
Older DE  
Younger DE  
Non-DE

## All Cohorts

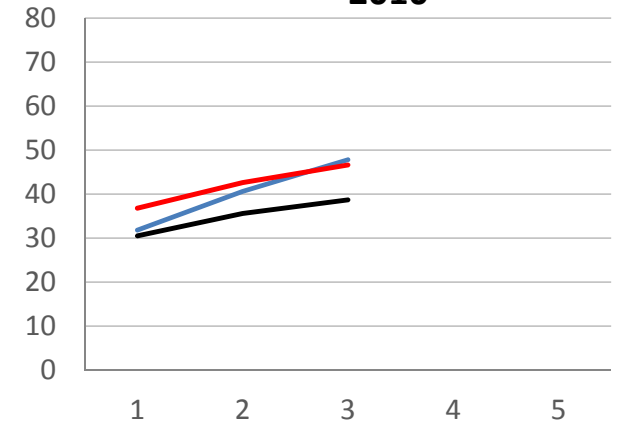
2008



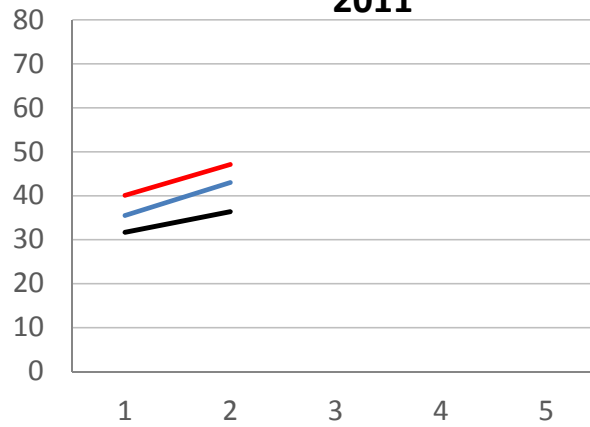
2009



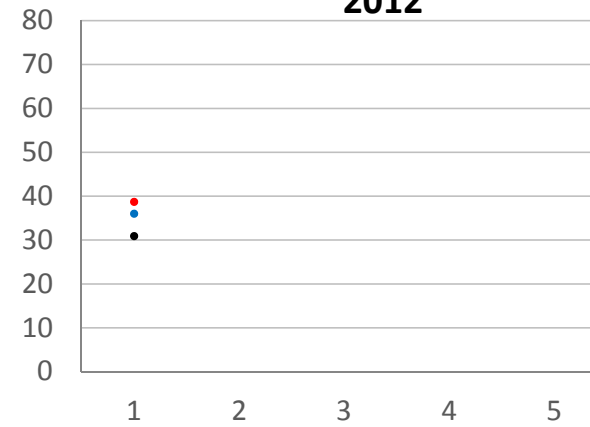
2010



2011



2012

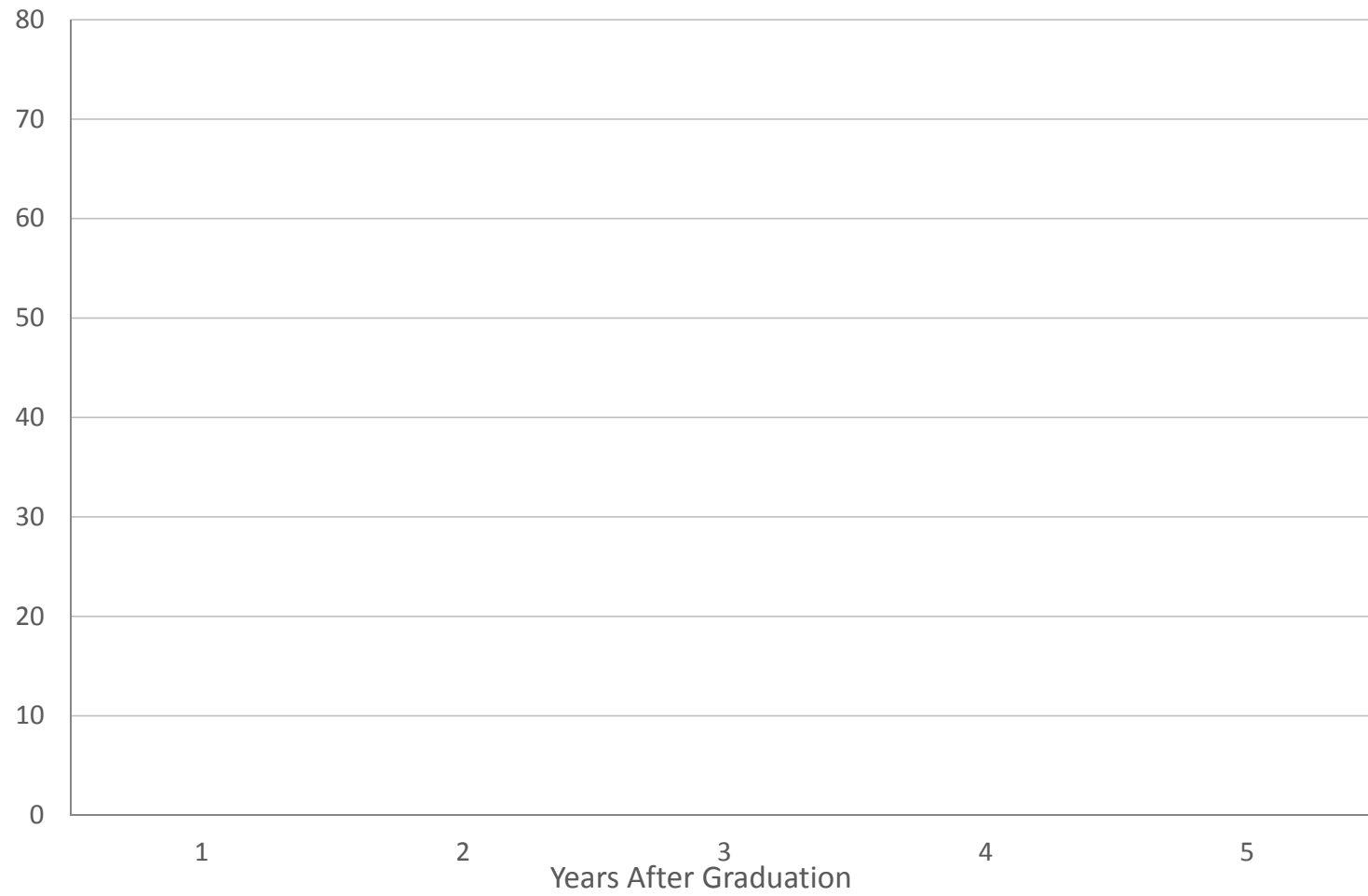


Older DE  
Younger DE  
Non-DE

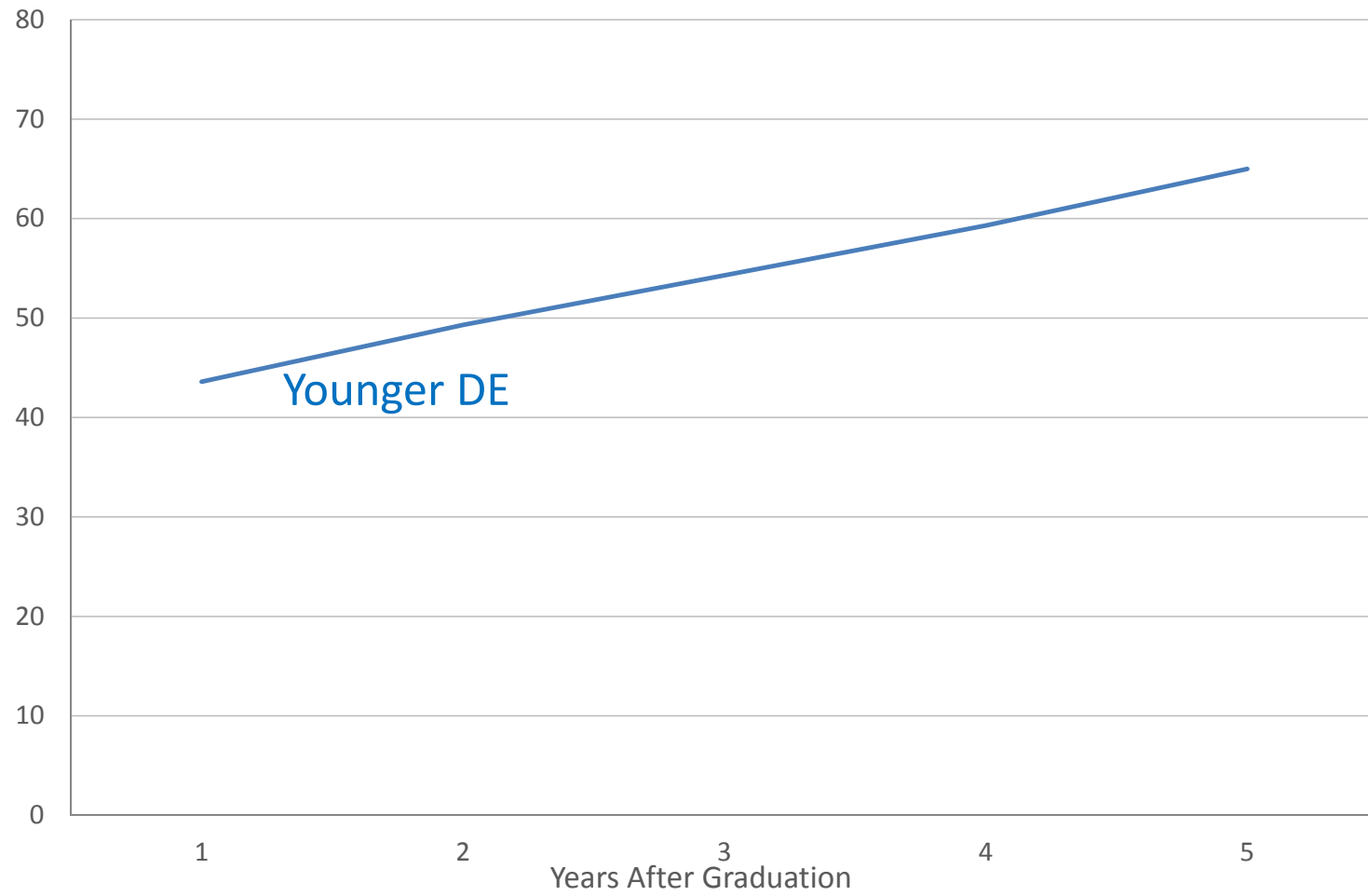
Degree Graduates  
(\$2014)



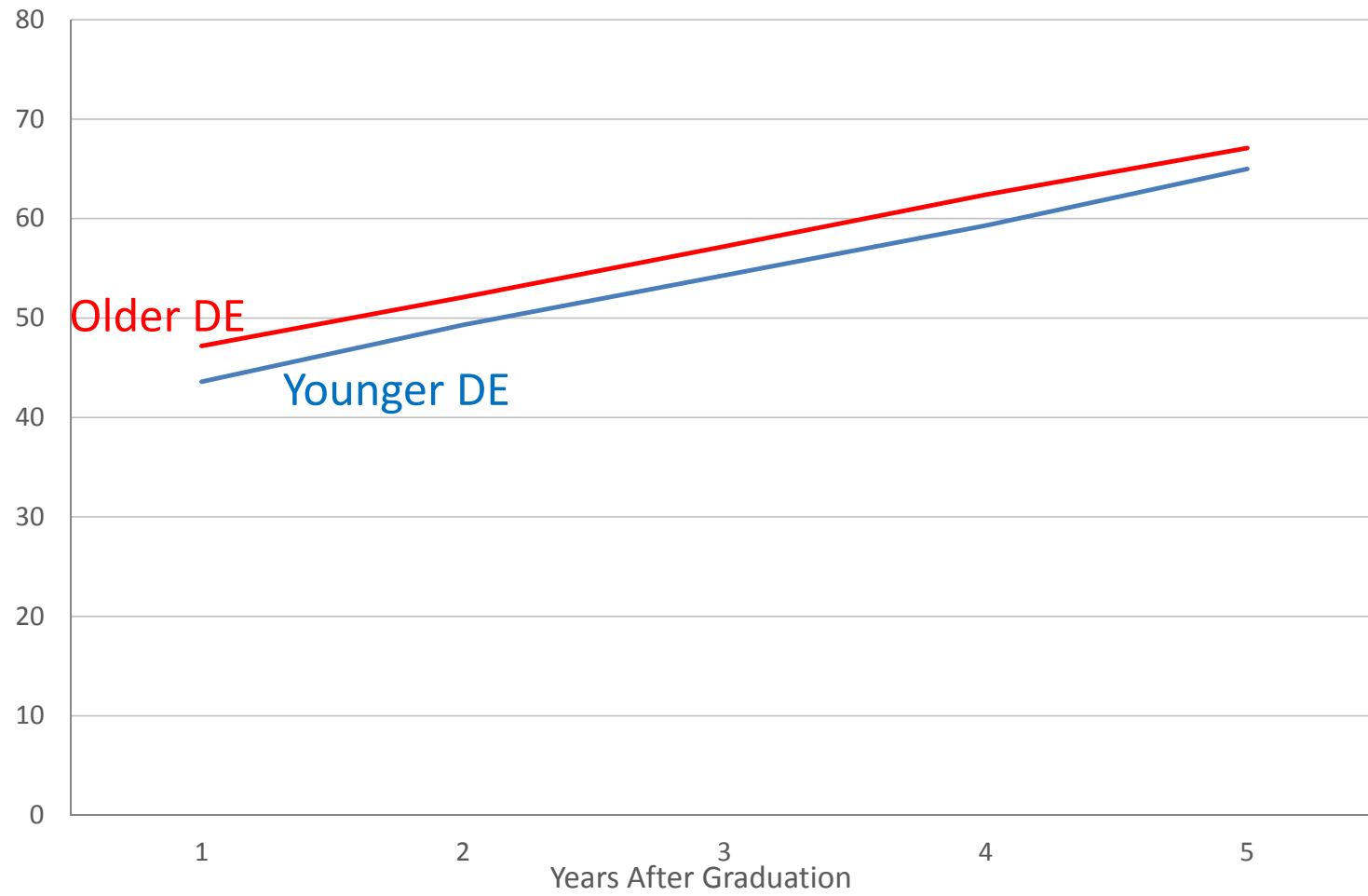
## 2008 Cohort



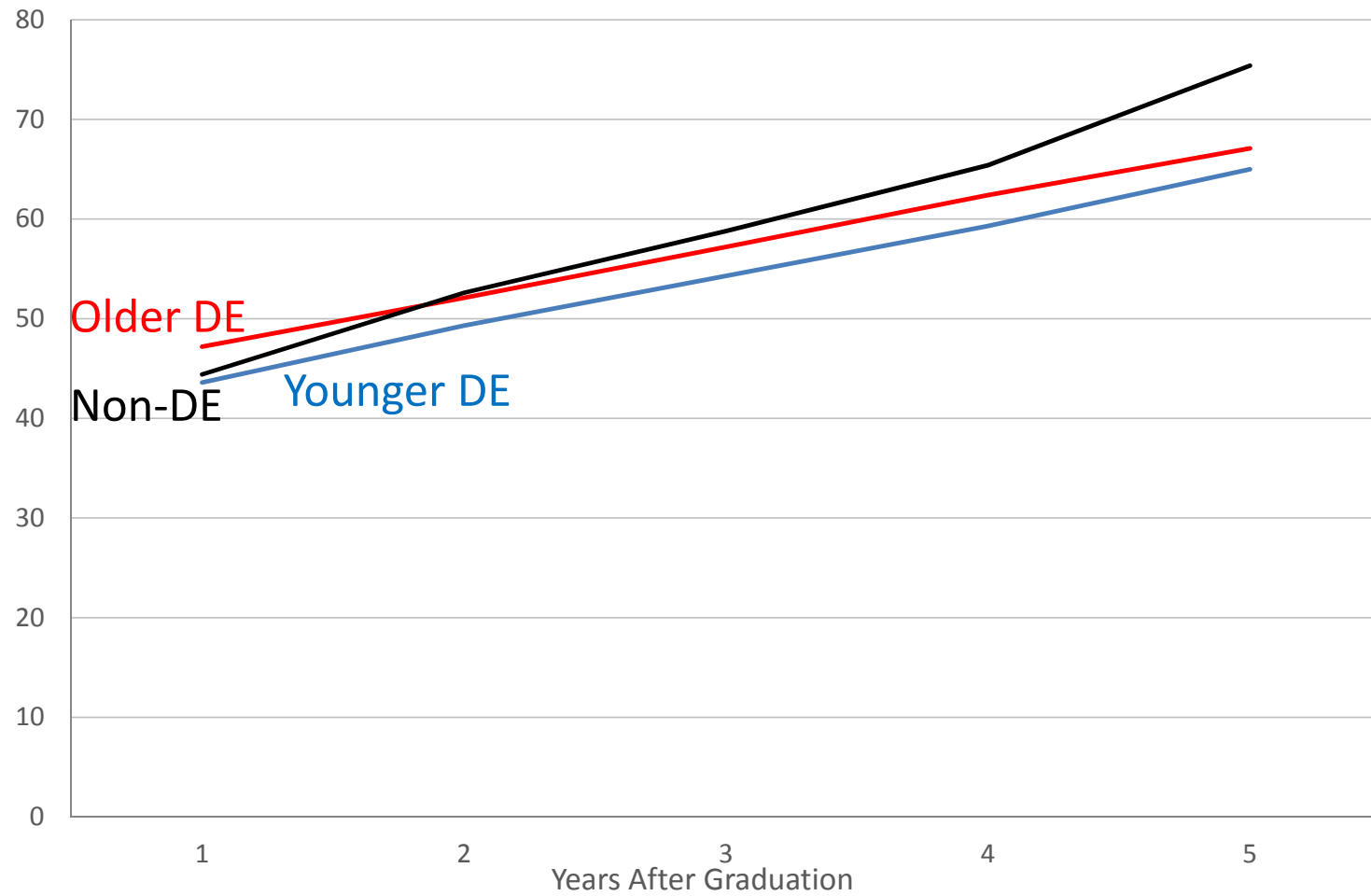
## 2008 Cohort



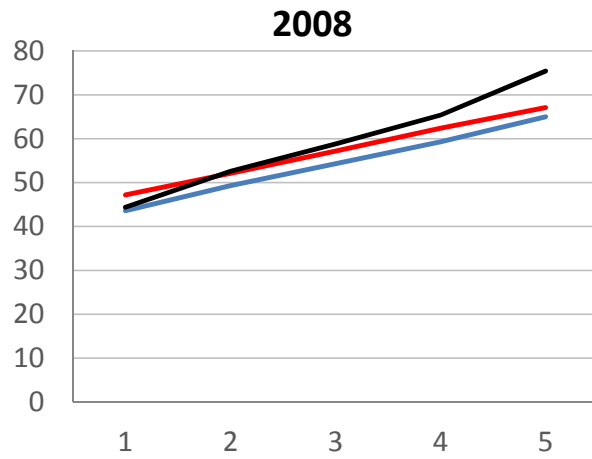
## 2008 Cohort



## 2008 Cohort



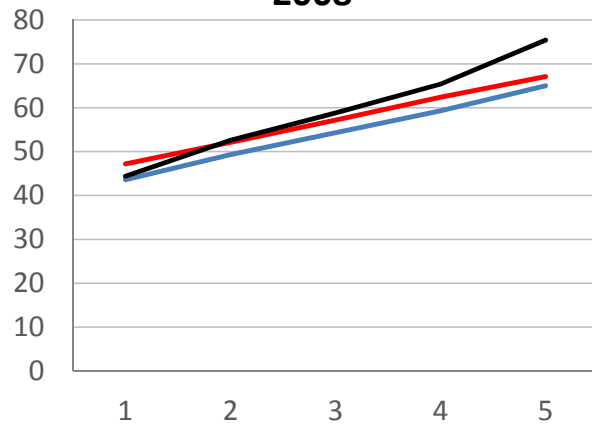
## All Cohorts



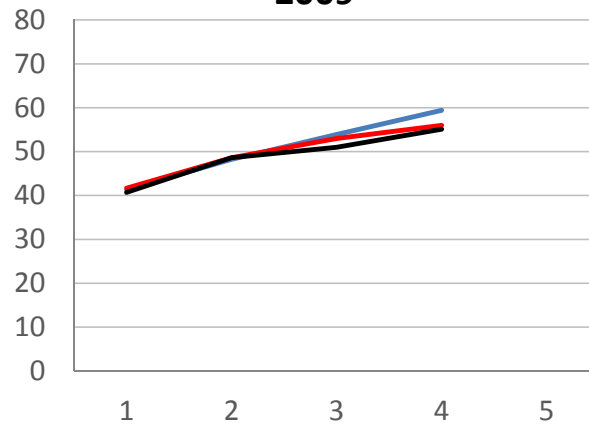
Older DE  
Younger DE  
Non-DE

## All Cohorts

2008

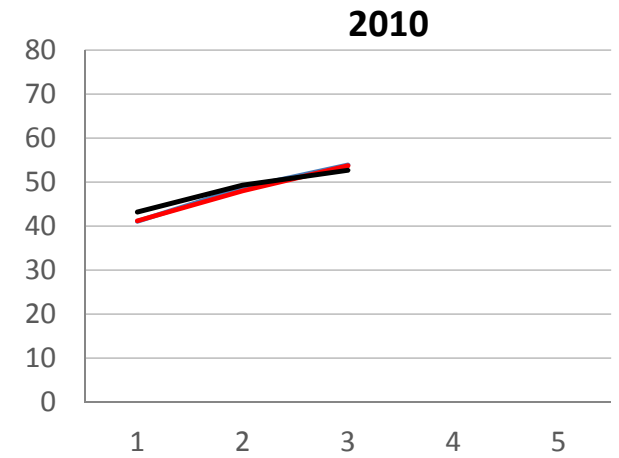
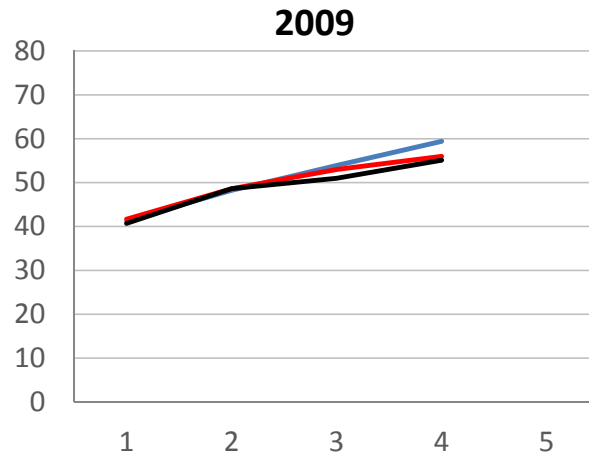
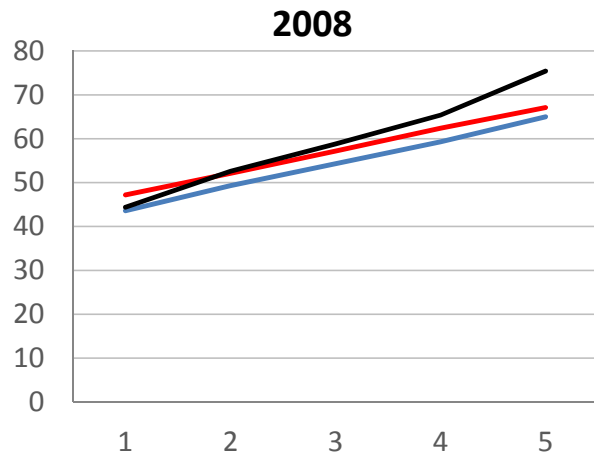


2009



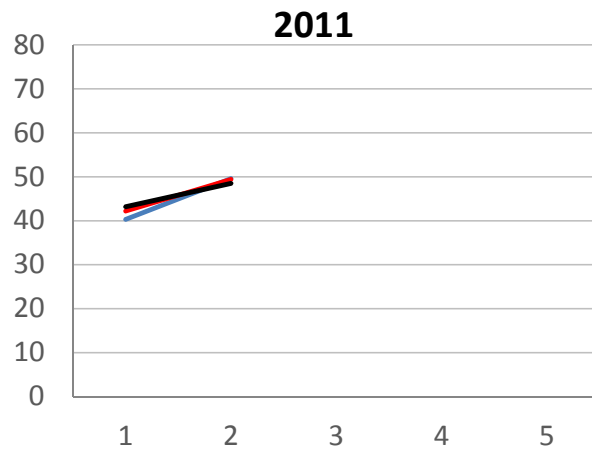
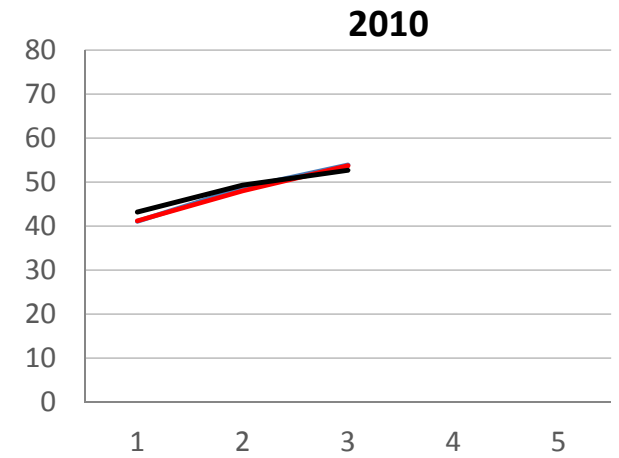
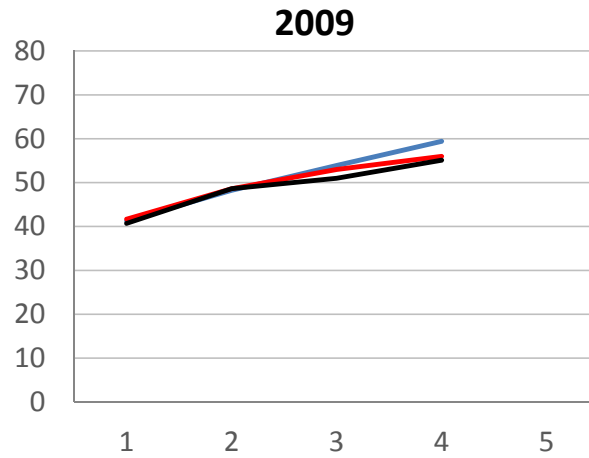
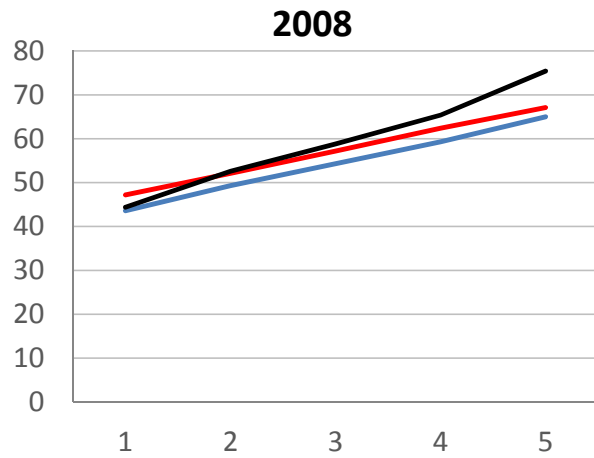
Older DE  
Younger DE  
Non-DE

## All Cohorts



Older DE  
Younger DE  
Non-DE

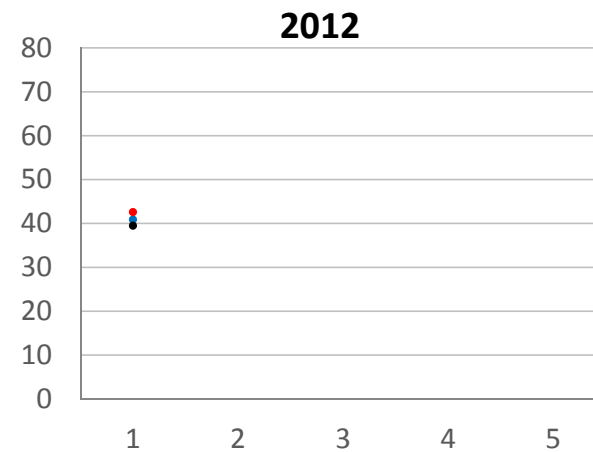
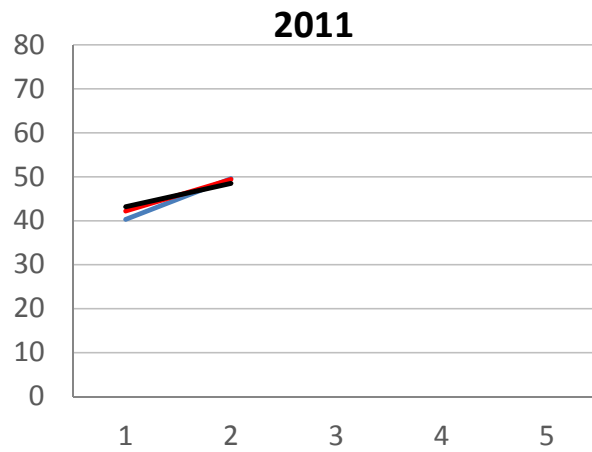
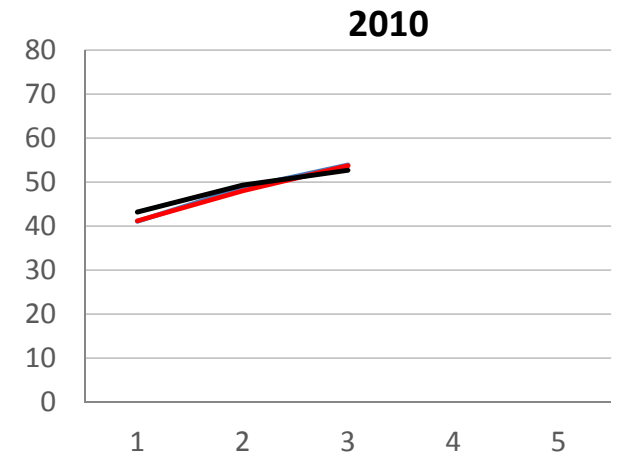
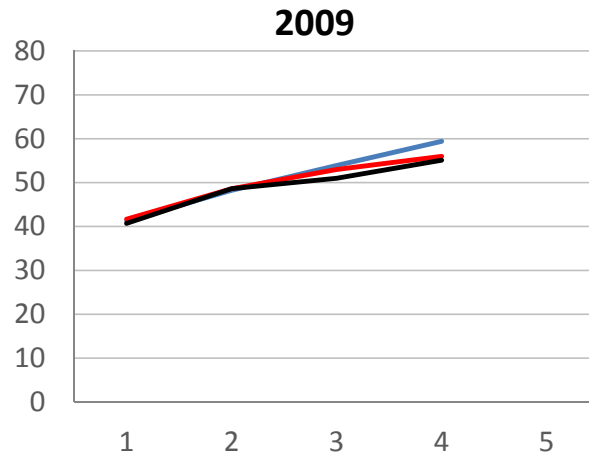
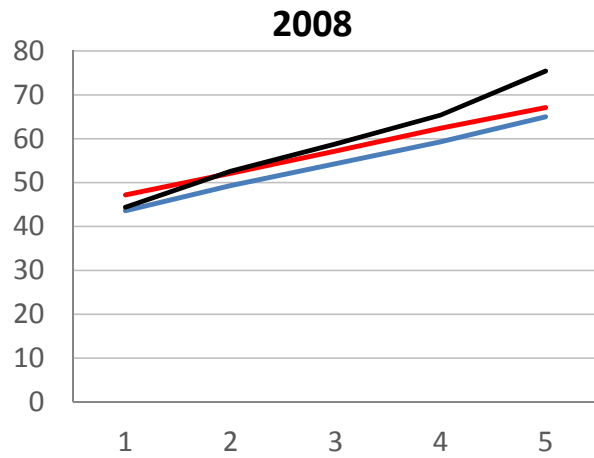
## All Cohorts



Older DE  
Younger DE  
Non-DE



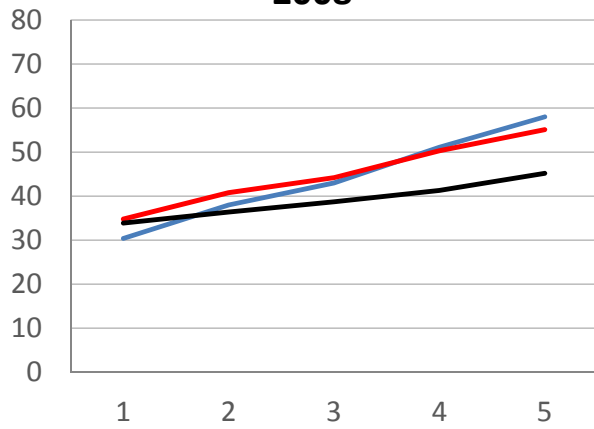
## All Cohorts



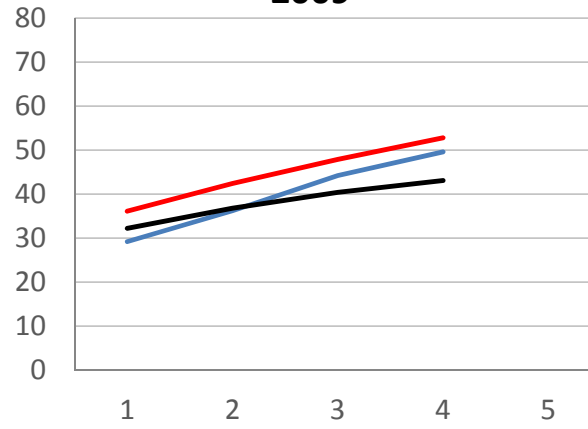
Older DE  
Younger DE  
Non-DE

# Diploma Graduates

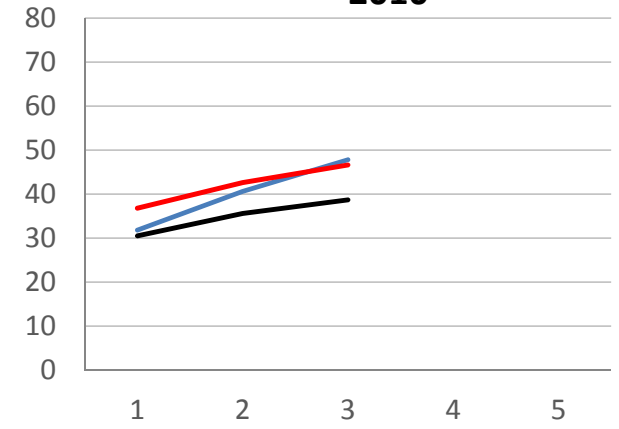
2008



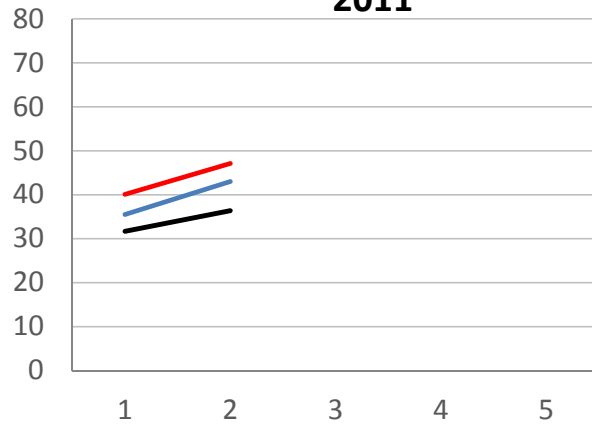
2009



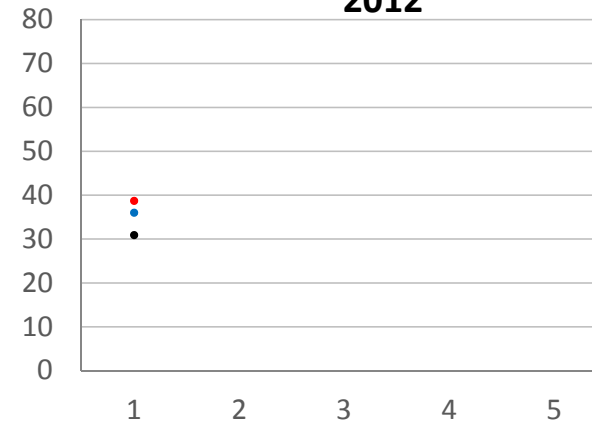
2010



2011

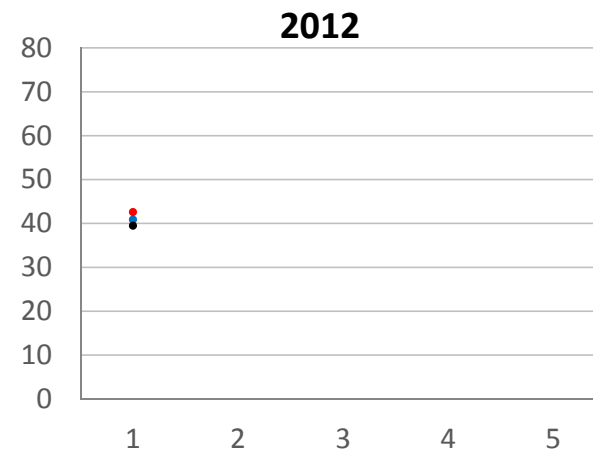
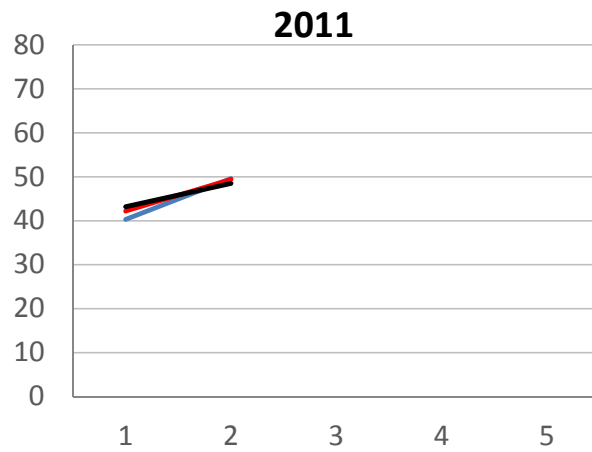
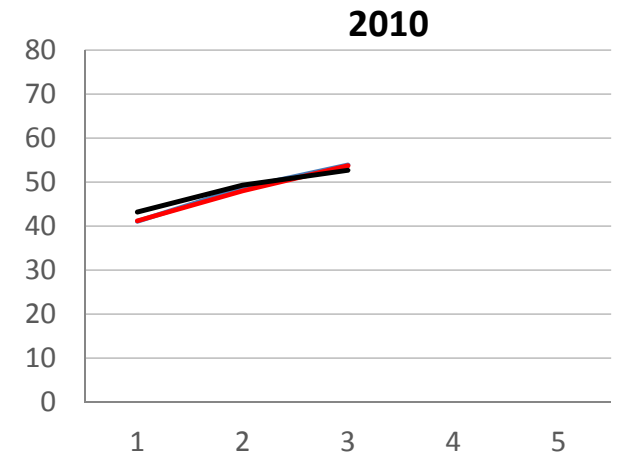
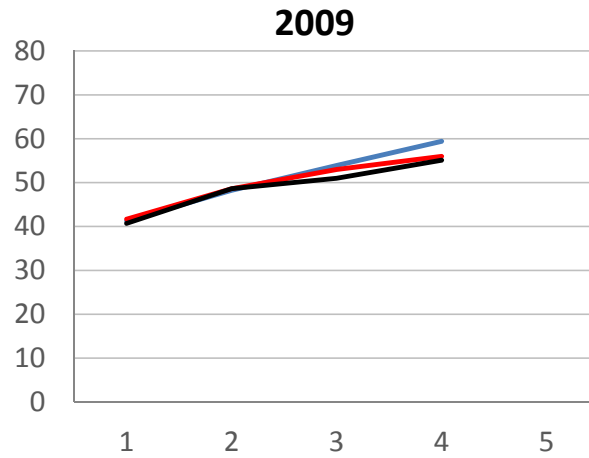
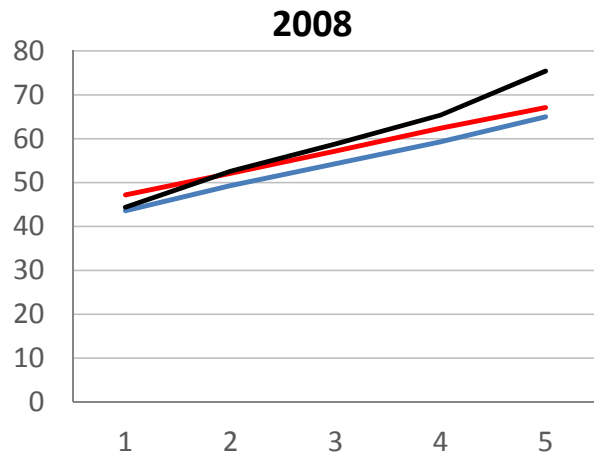


2012



Older DE  
Younger DE  
Non-DE

## Degree Graduates



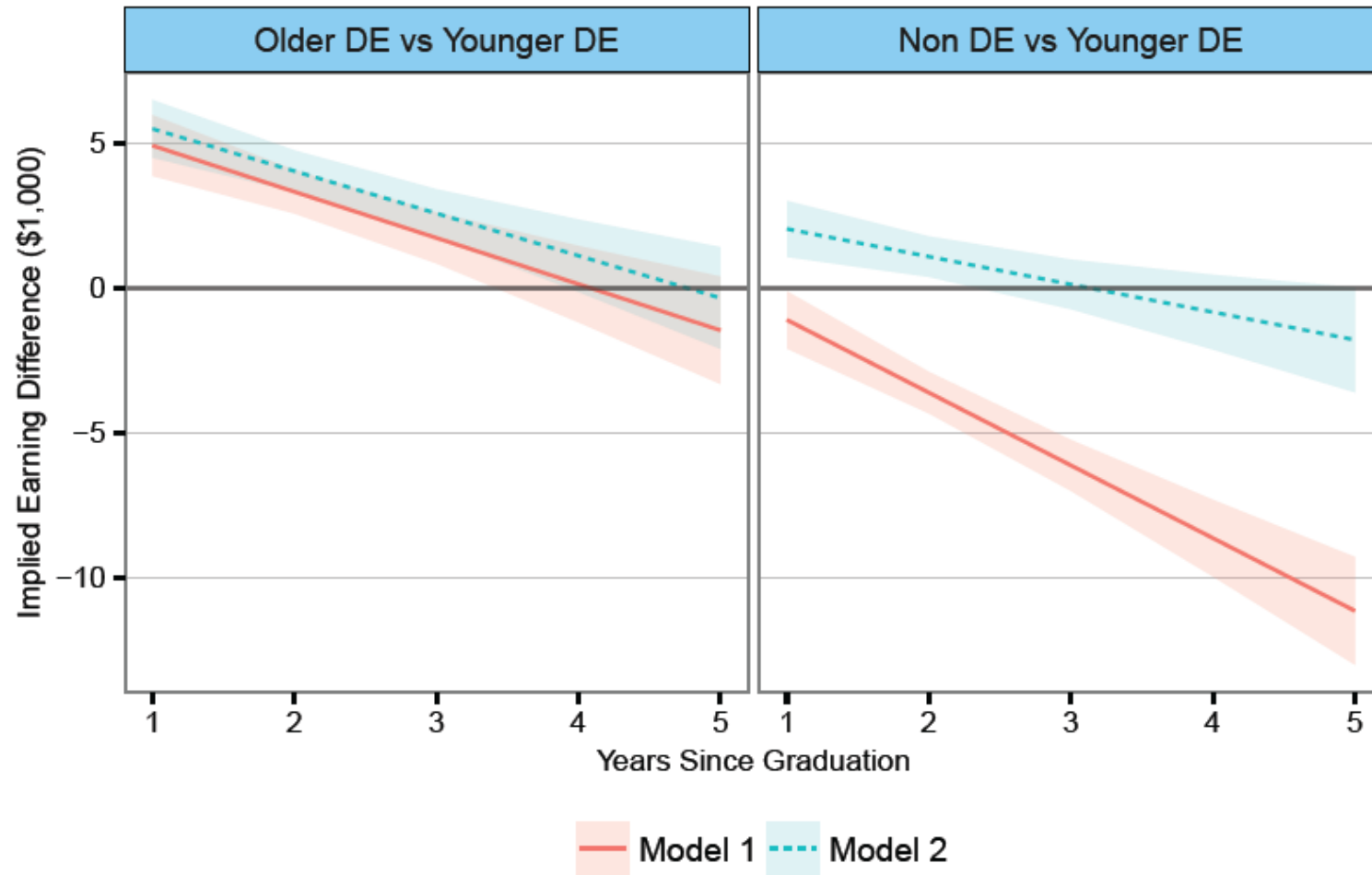
Older DE  
Younger DE  
Non-DE

# Fitted Earnings Gaps From Regressions

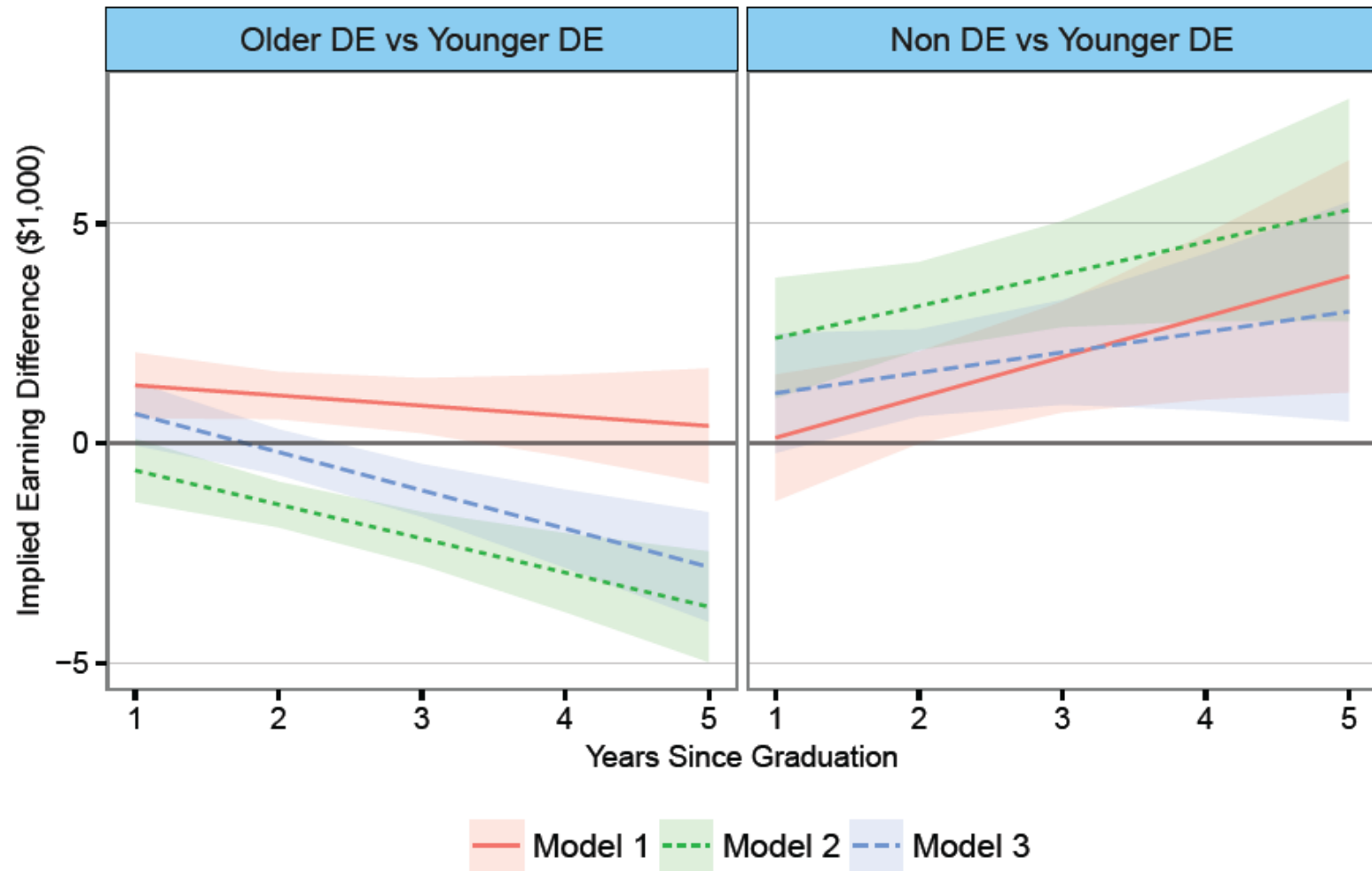
# Regression Models

- M1: cohort, YSG, APPTYPE, interactions
- M2: add gender and FOS
- M3: add final GPA (degree graduates only)

## Fitted Earnings Gap, Diploma Graduates



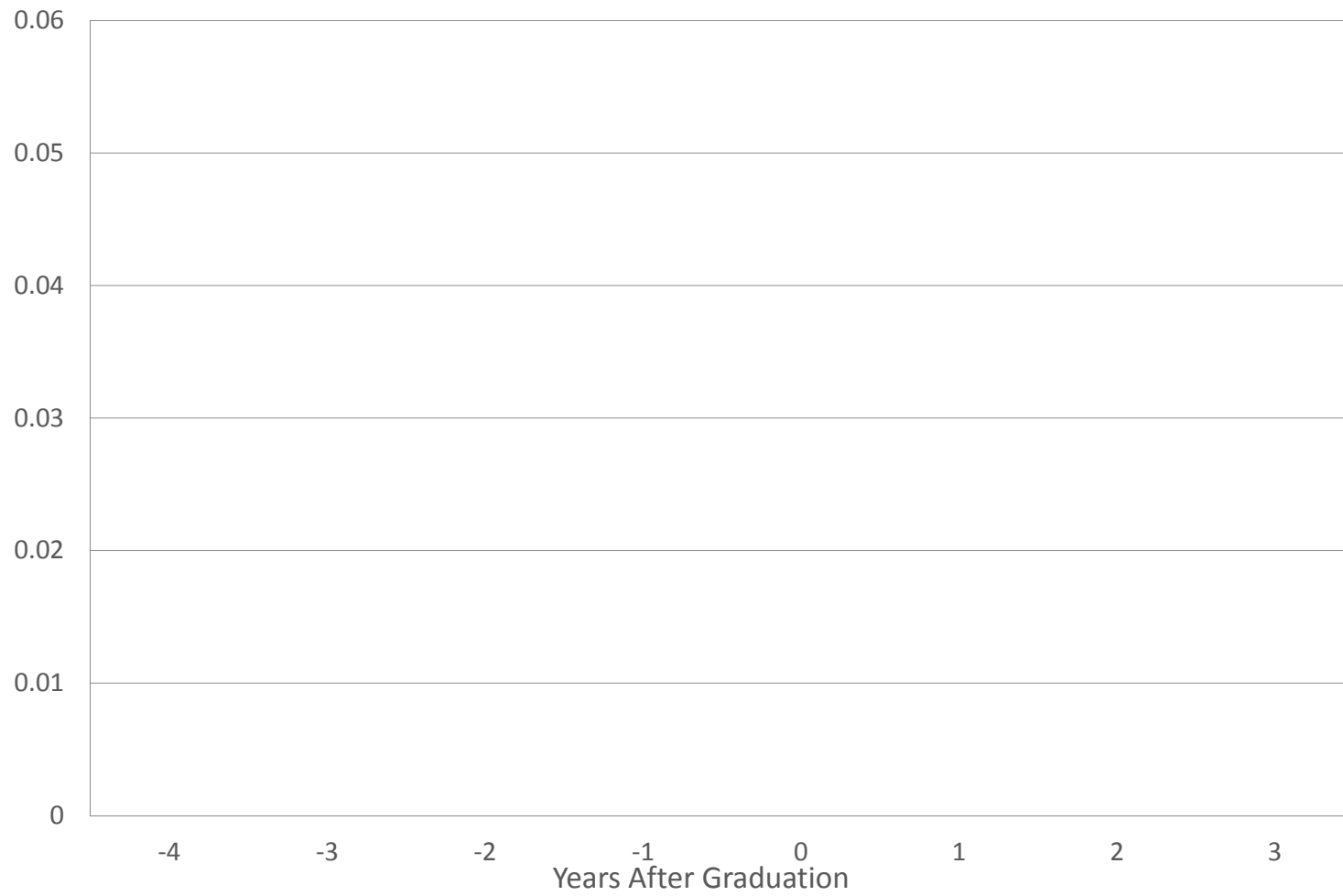
## Fitted Earnings Gap, Diploma Graduates



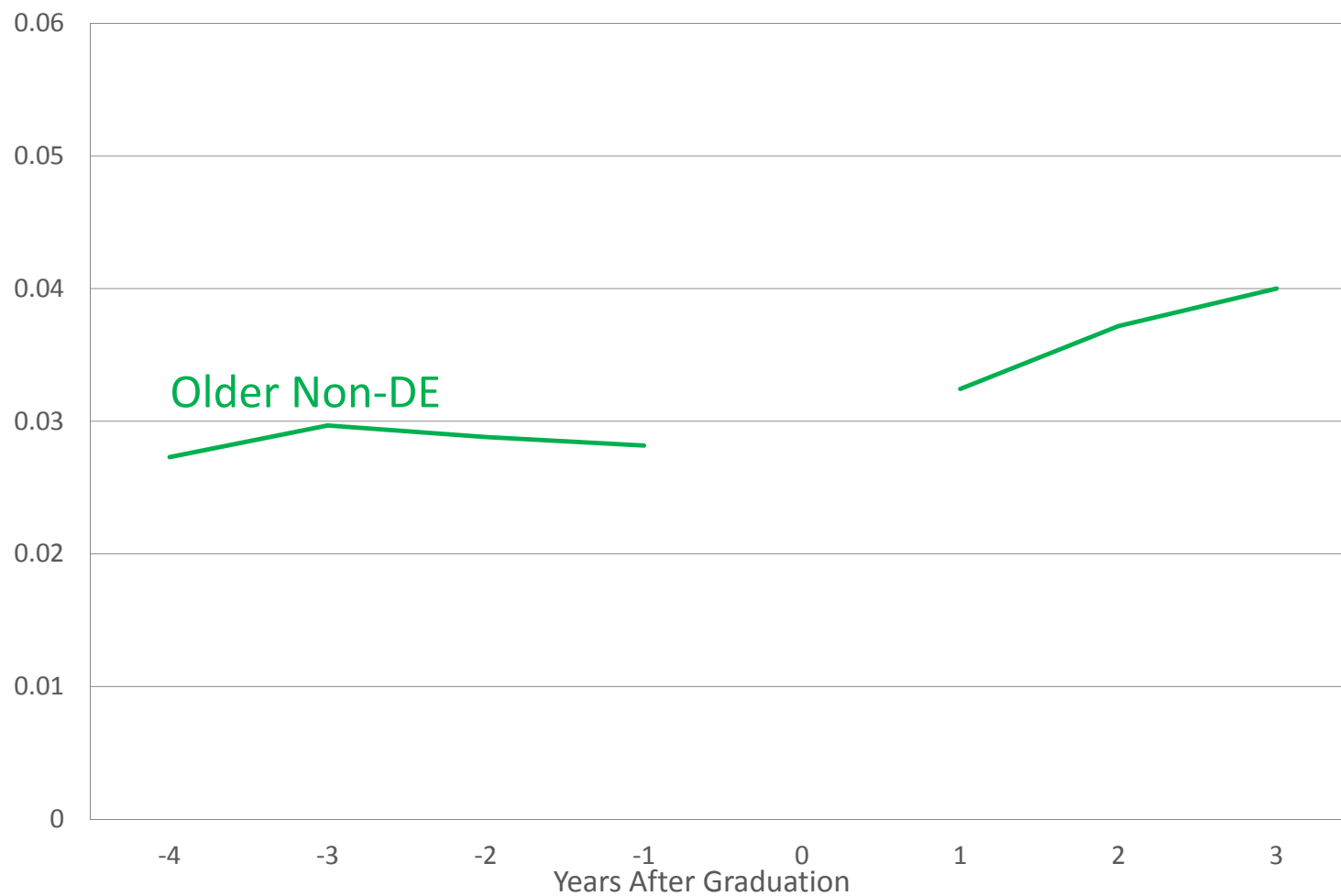
# Pre-Post Earnings of Diploma Graduates (\$2014)



## Pre-Post Earnings of Diploma Graduates



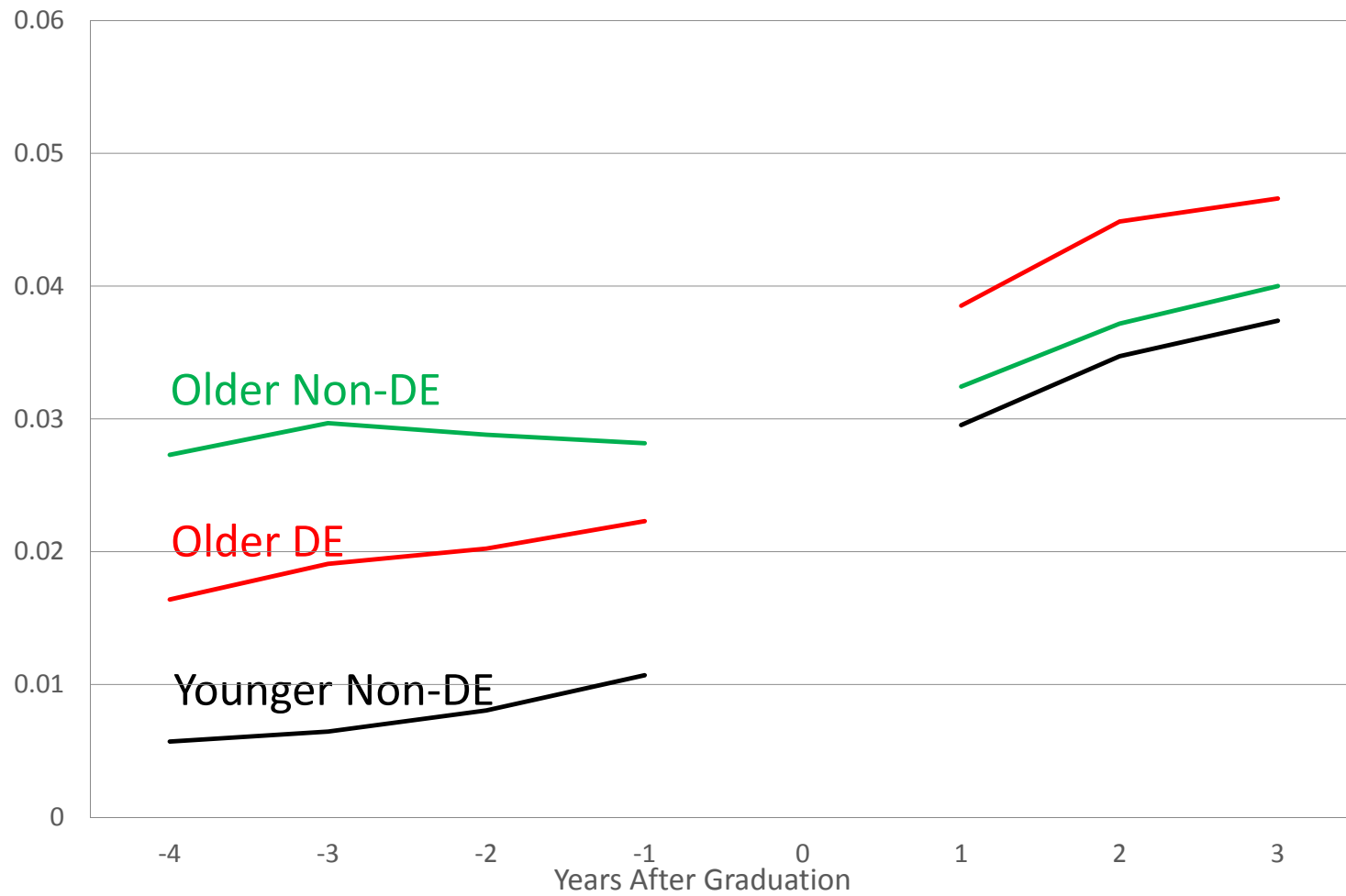
# Pre-Post Earnings of Diploma Graduates



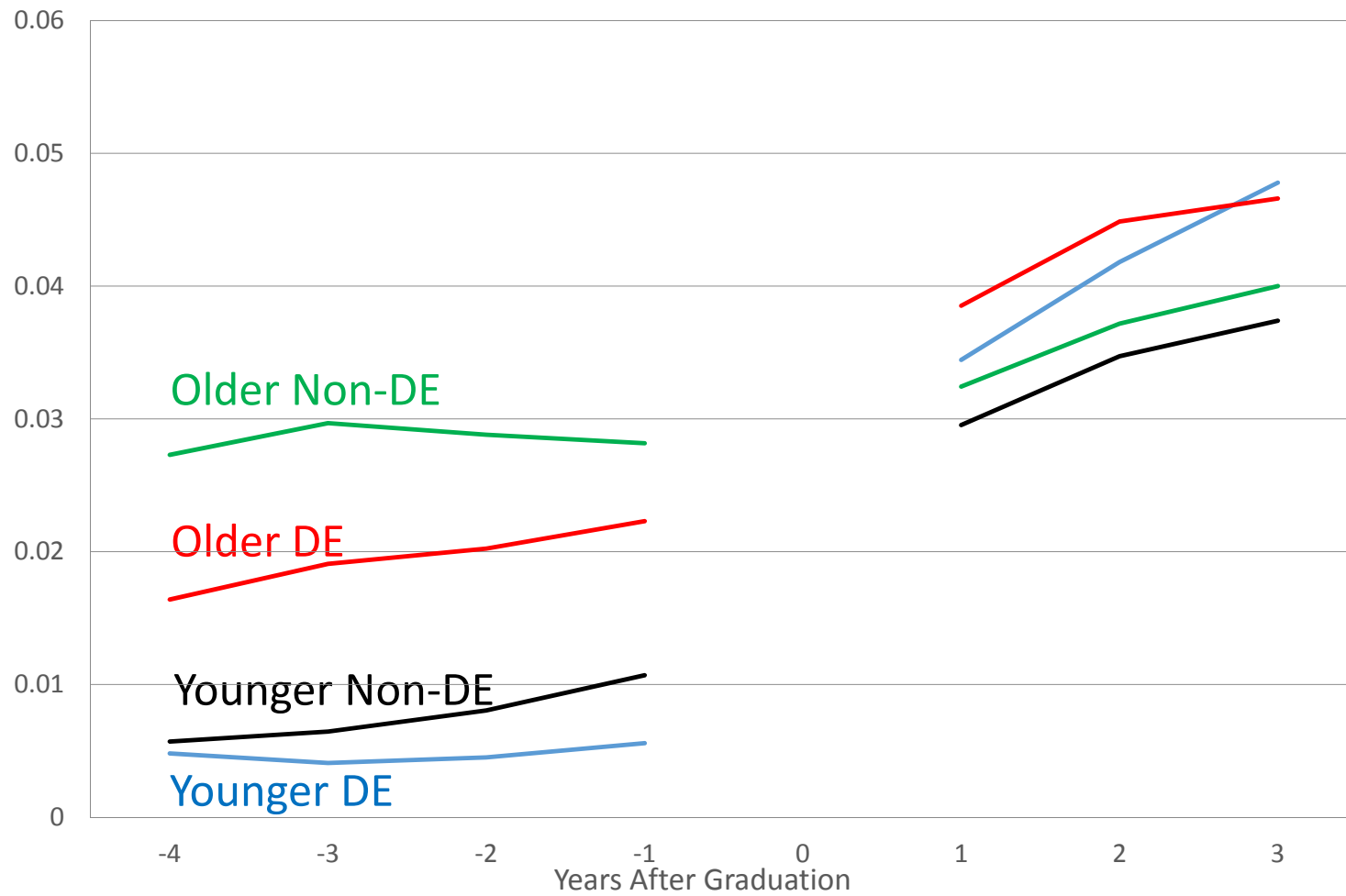
## Pre-Post Earnings of Diploma Graduates



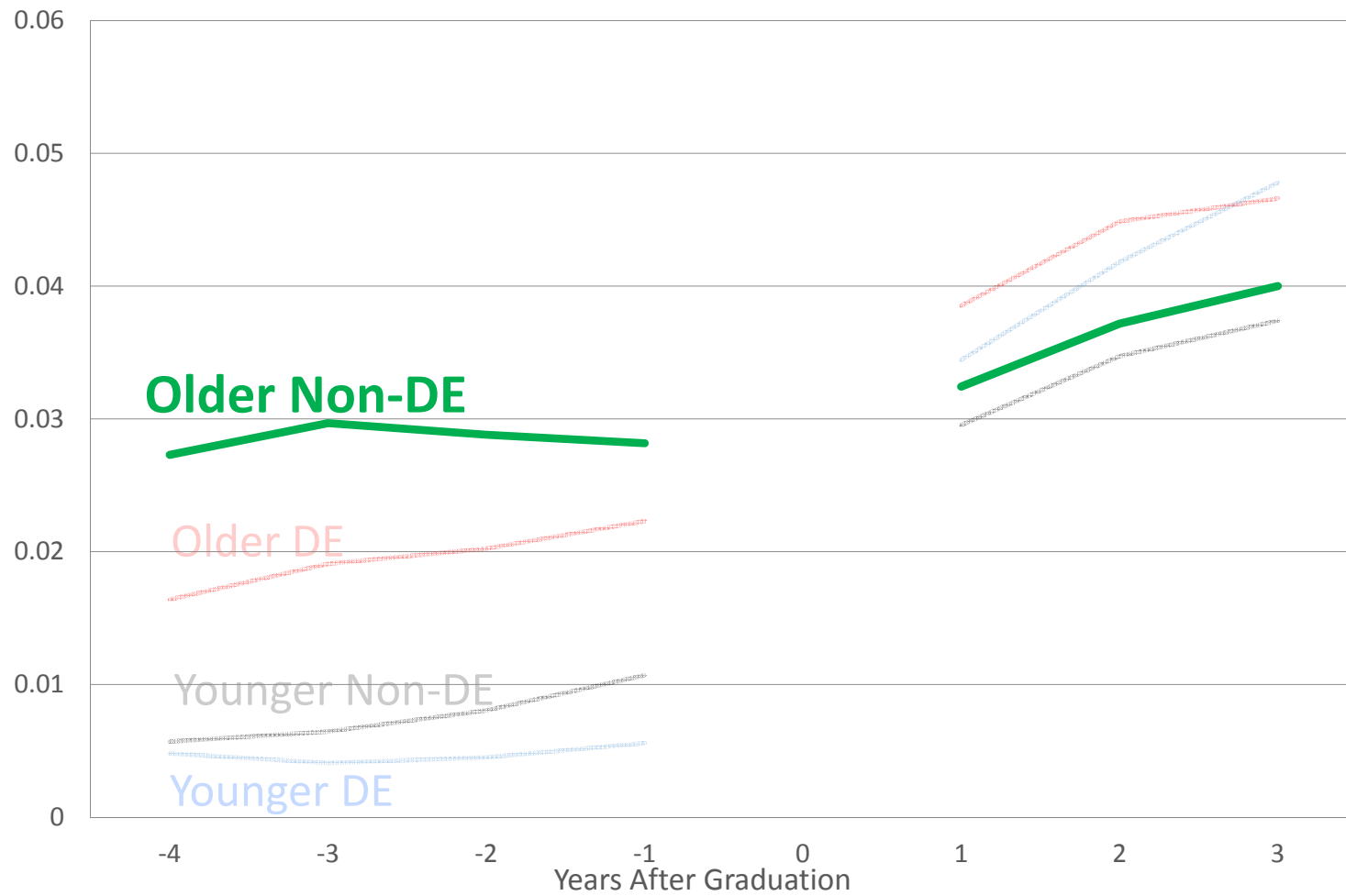
## Pre-Post Earnings of Diploma Graduates



## Pre-Post Earnings of Diploma Graduates

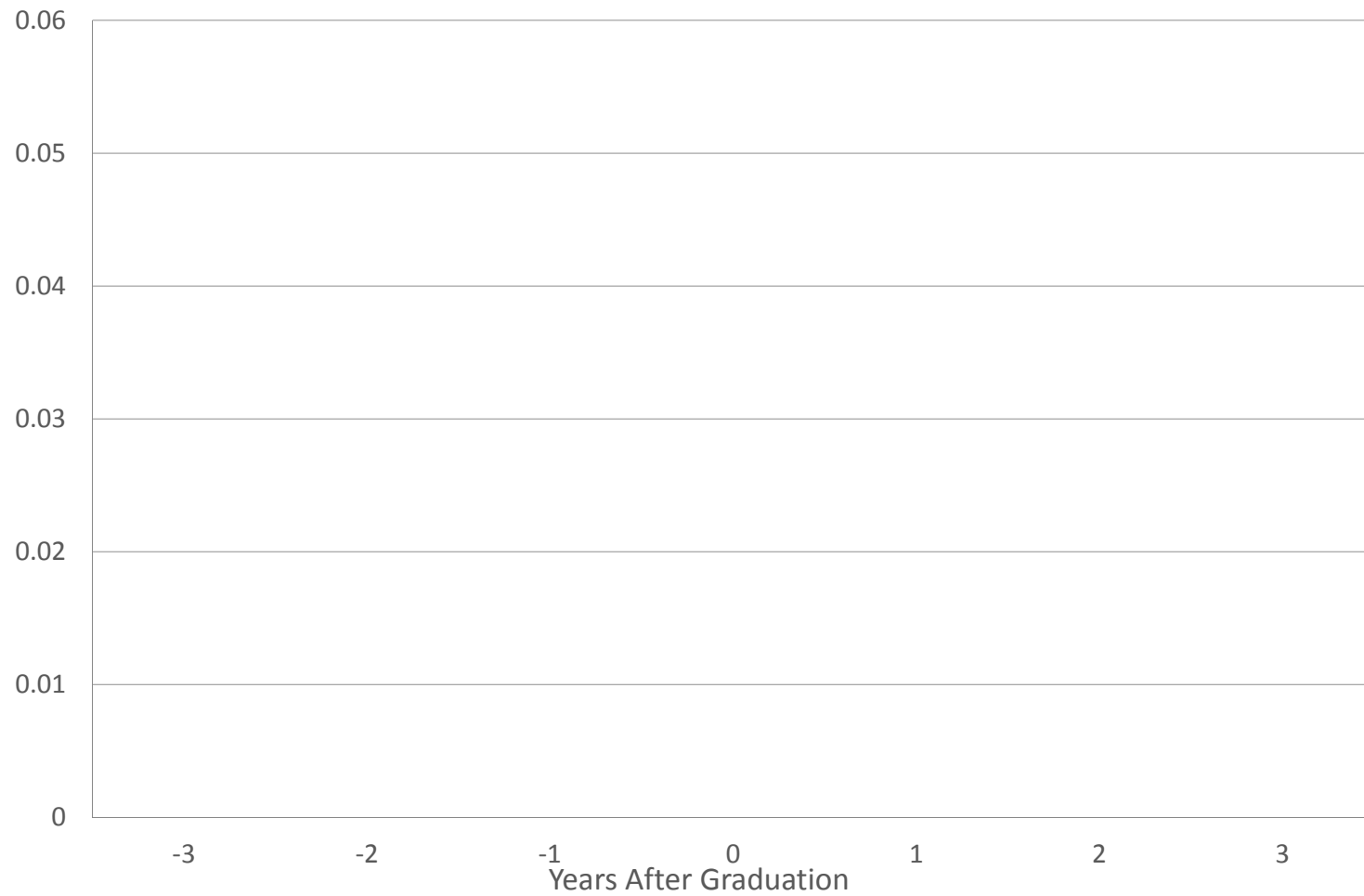


# Pre-Post Earnings of Diploma Graduates



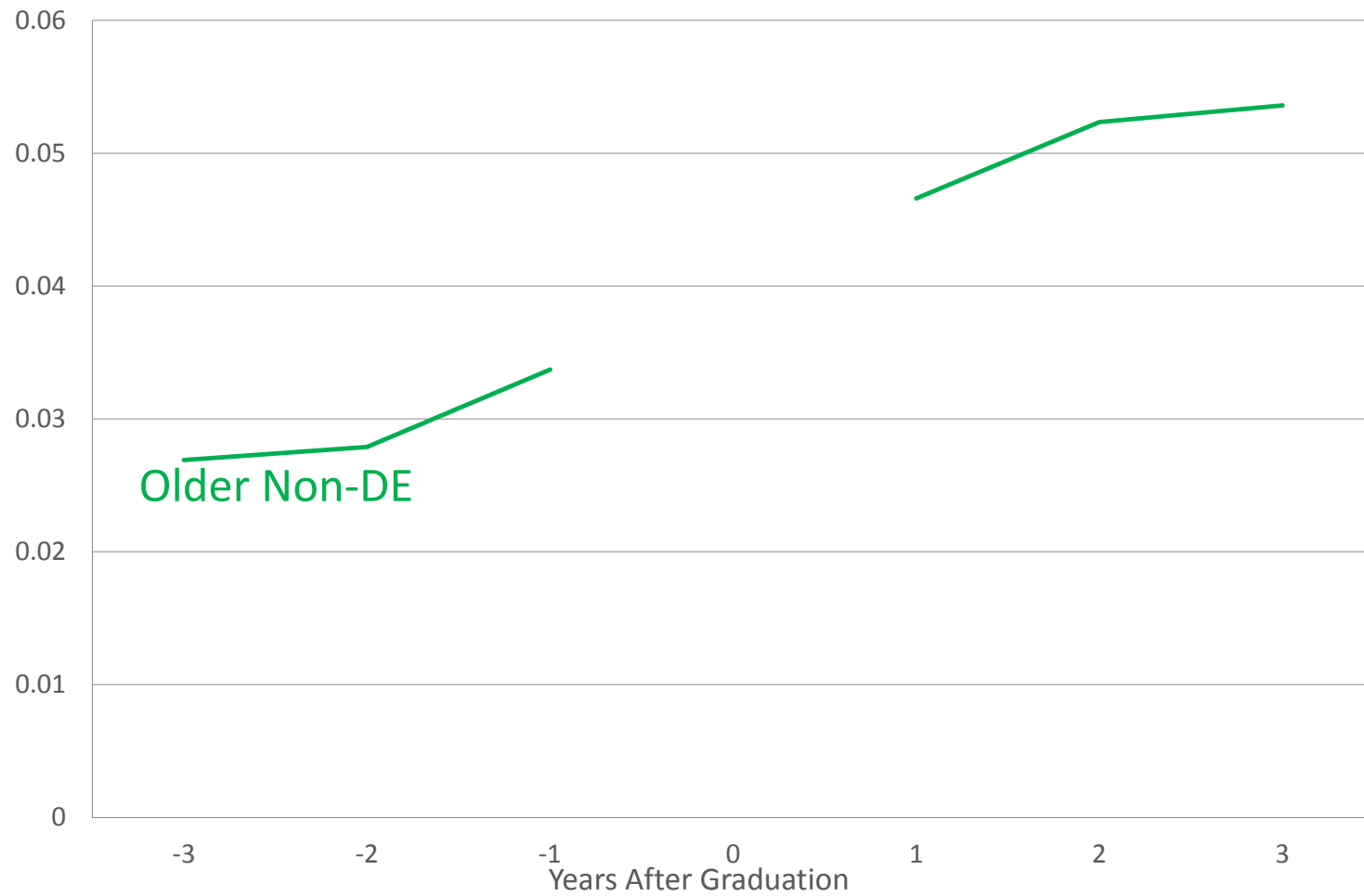
# Pre-Post Earnings of Degree Graduates (\$2014)

## Pre-Post Earnings of Degree Graduates (\$2014)

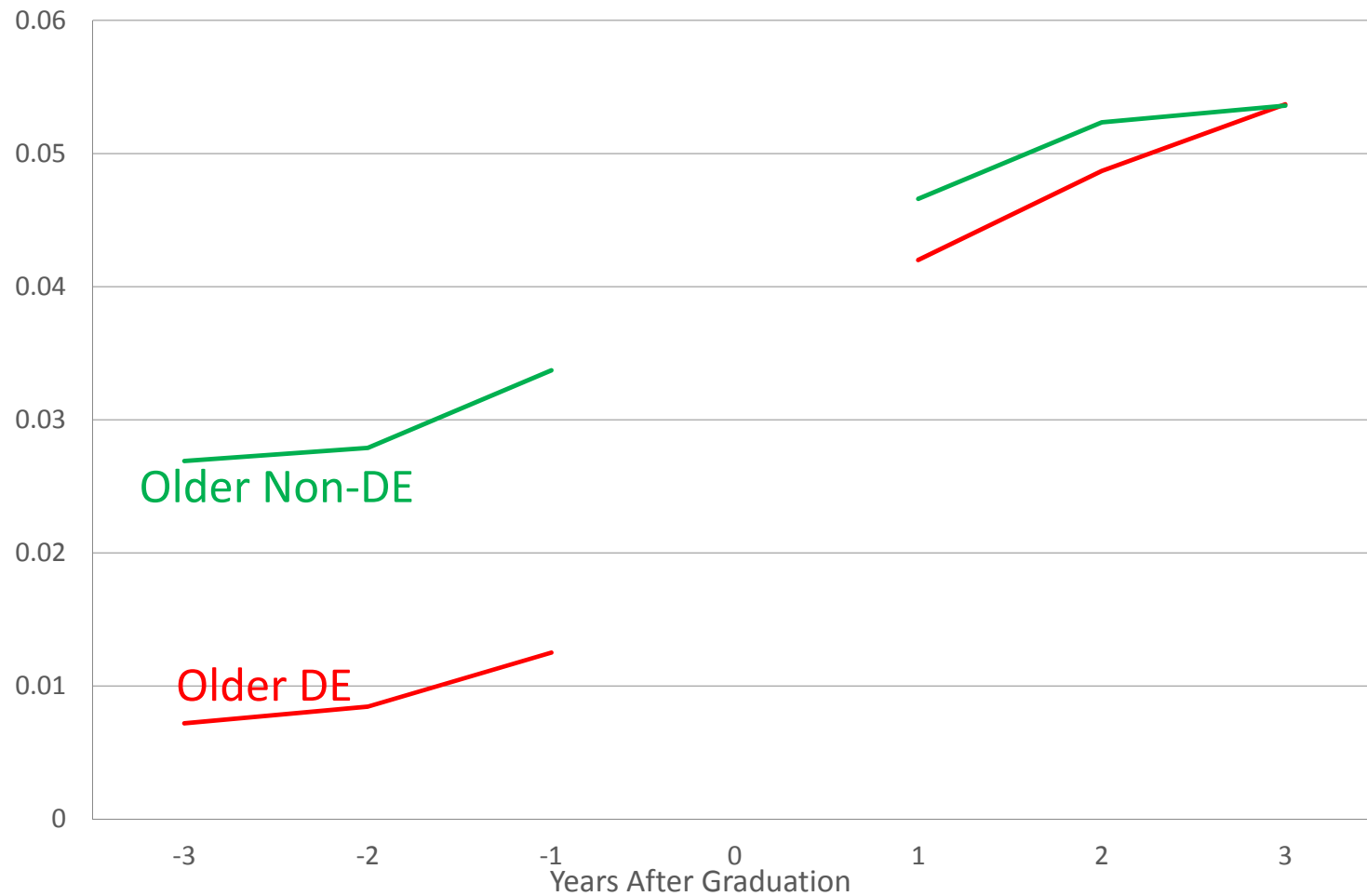




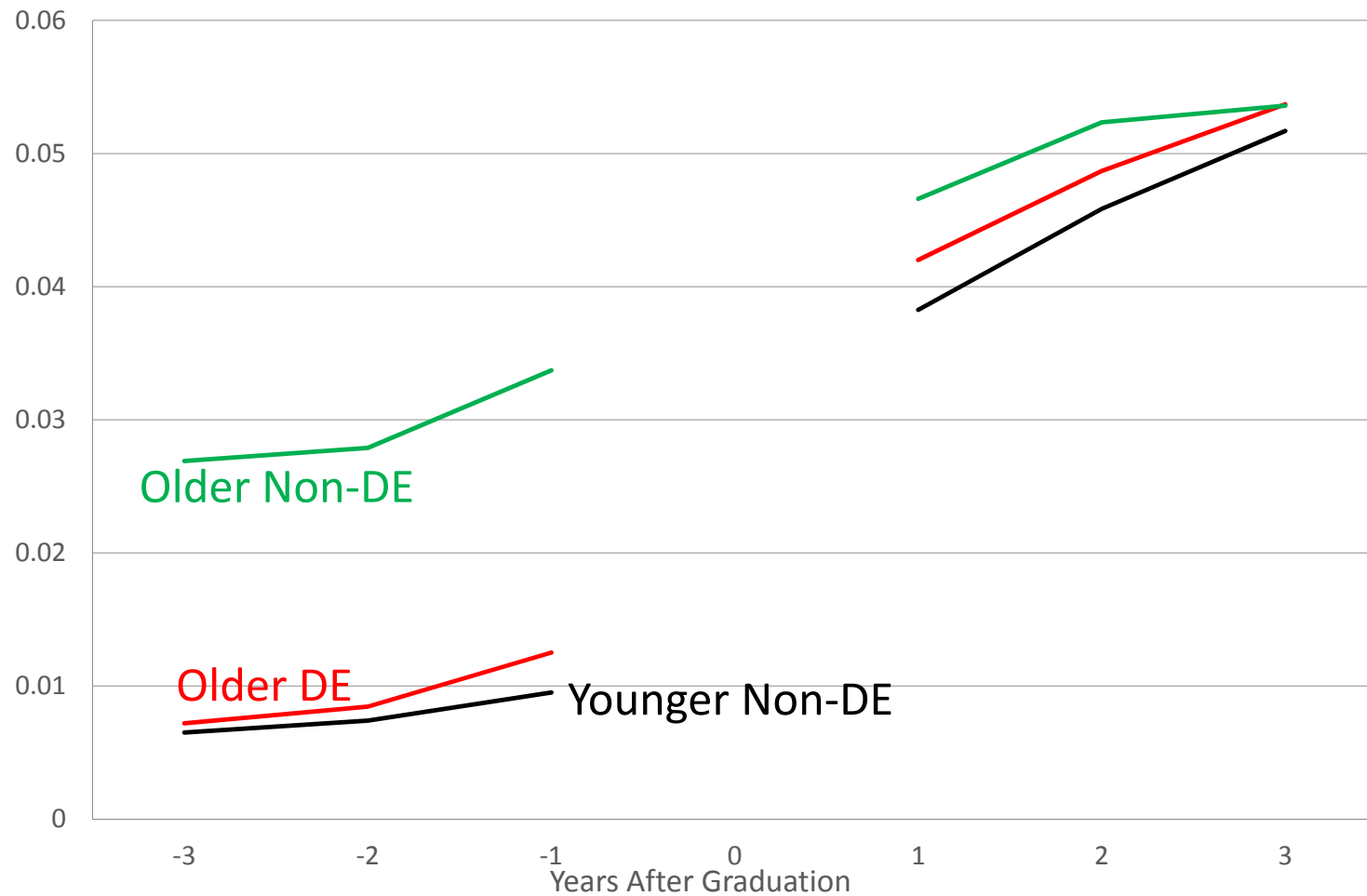
## Pre-Post Earnings of Degree Graduates (\$2014)



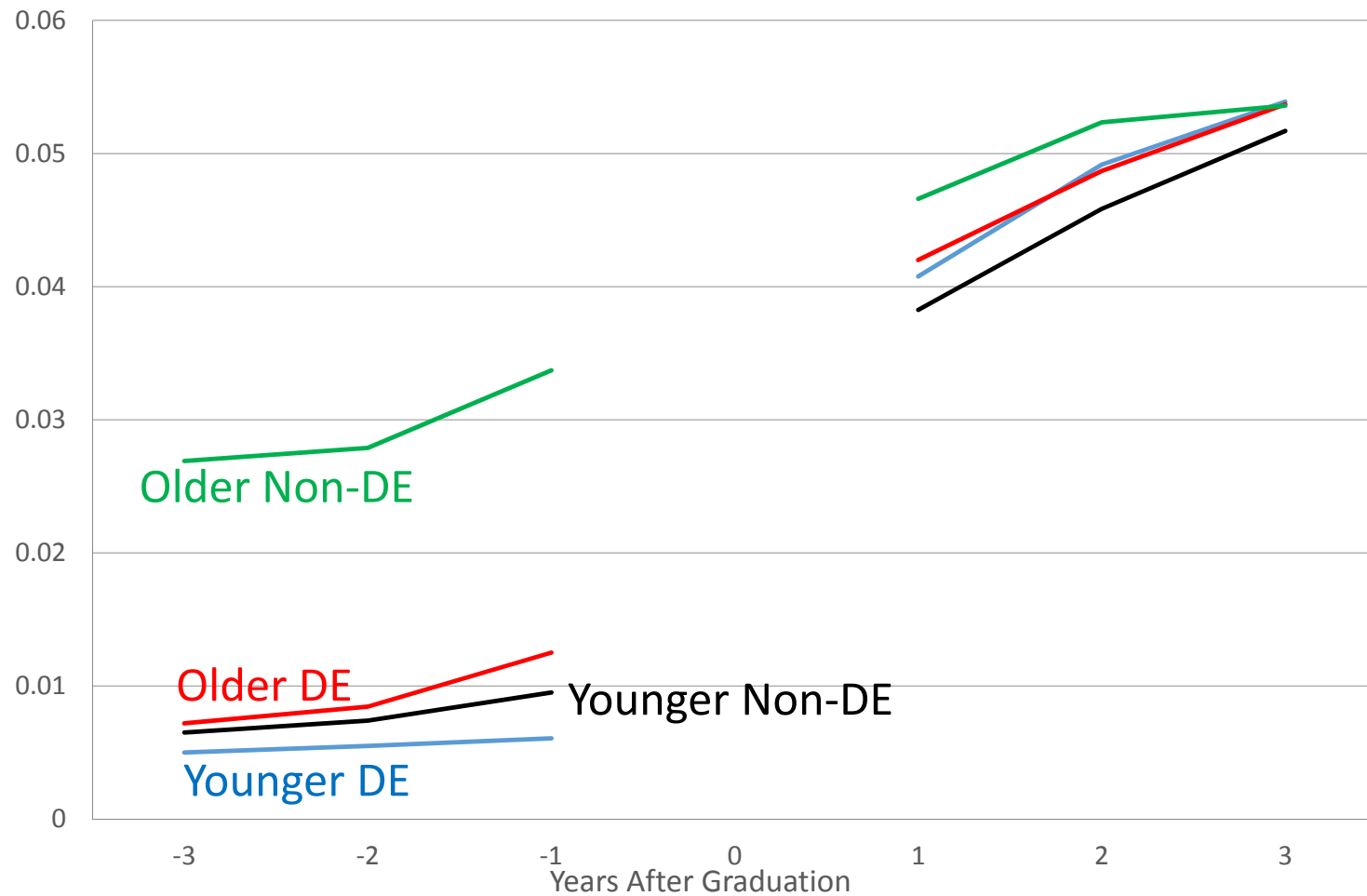
## Pre-Post Earnings of Degree Graduates (\$2014)



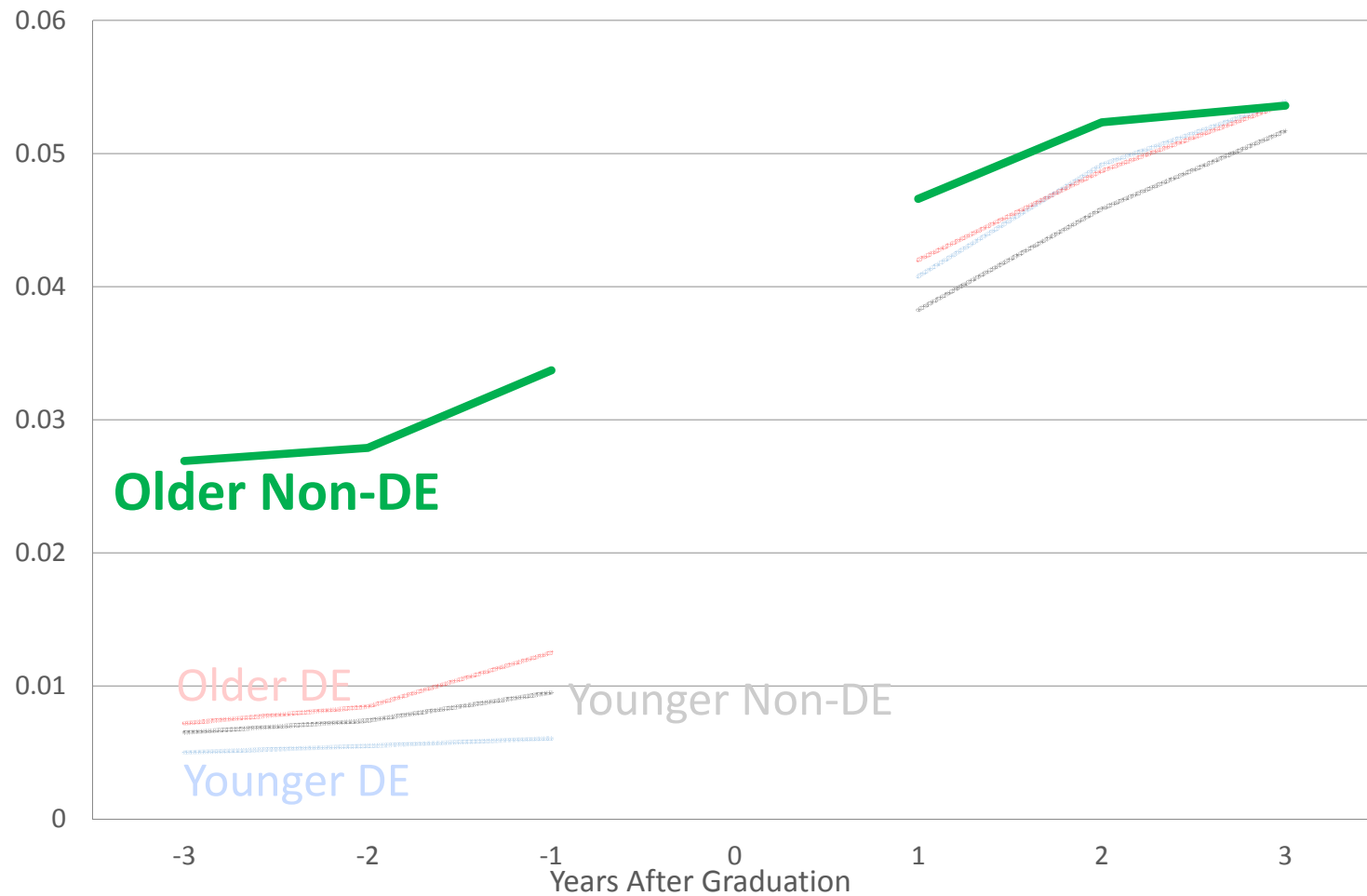
## Pre-Post Earnings of Degree Graduates (\$2014)



## Pre-Post Earnings of Degree Graduates (\$2014)



## Pre-Post Earnings of Degree Graduates (\$2014)



# Lessons and Future Work

# Original Questions & Challenges Remain

- Pathways through PSE
  - What are they?
  - Associated labour market outcomes?
- APPTYPE variable won't do it
- Need to *construct* pathways by tracking students
- But...

# Pathways are Complex

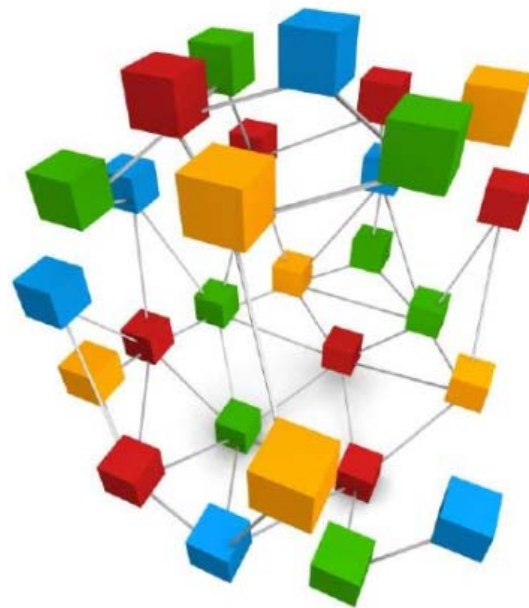




## Pathways are Complex



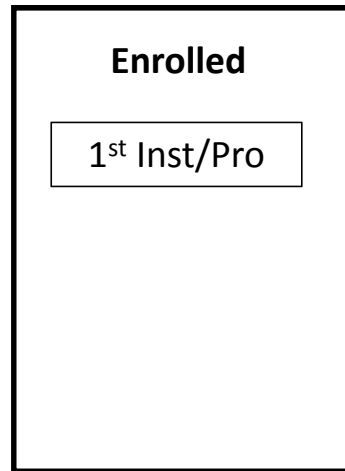
# Need to Connect the Dots



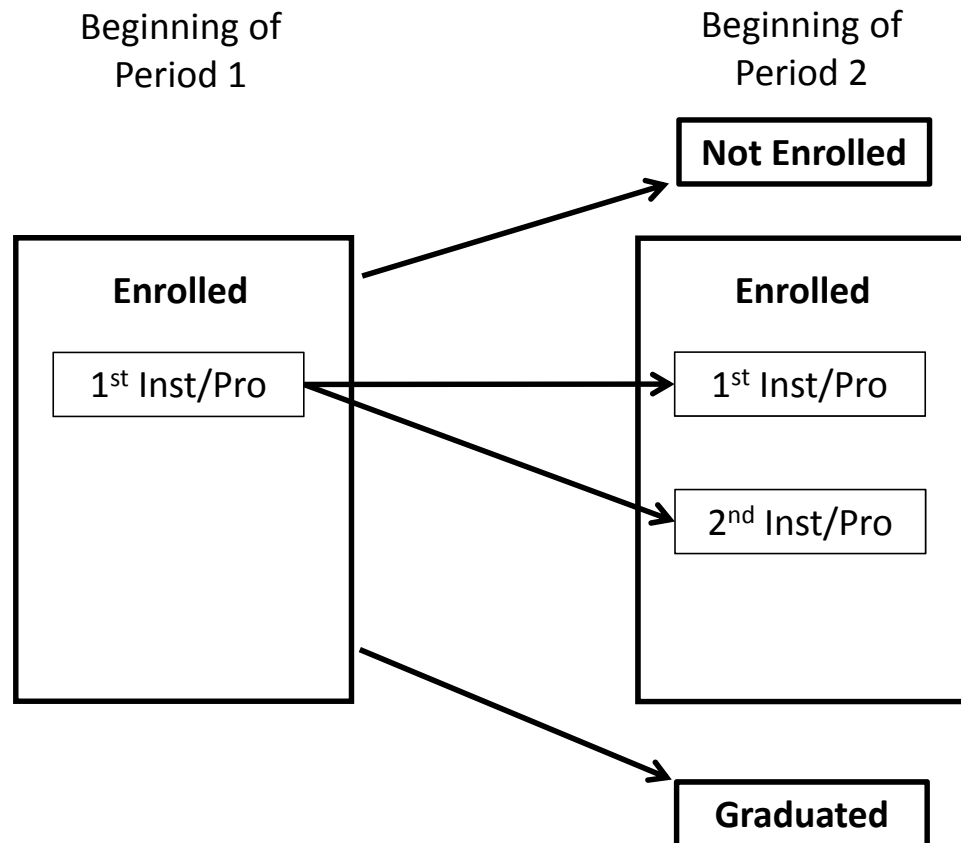
First Track Students In All  
Years at All Institutions

# Tracking Pathways

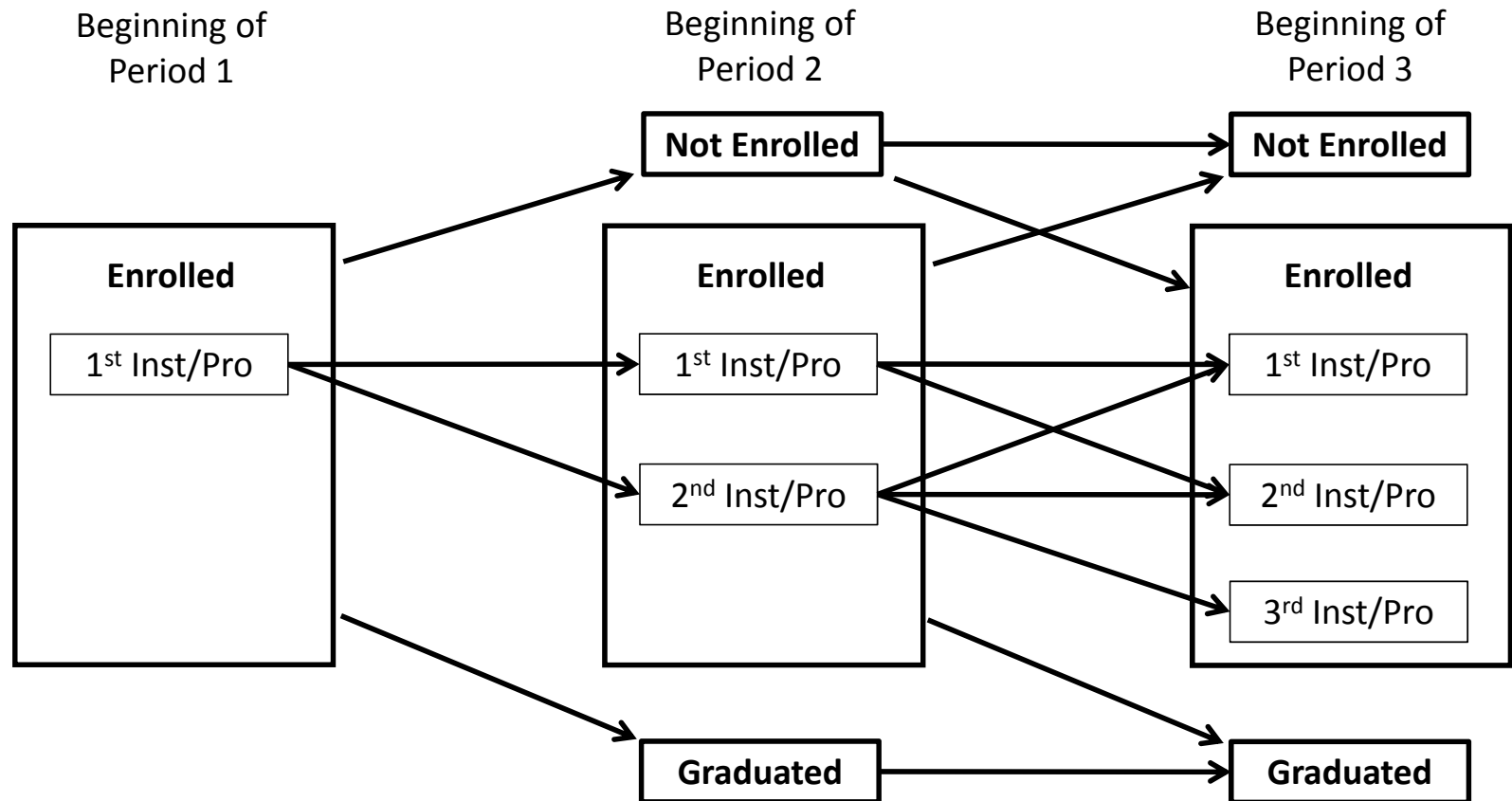
Beginning of  
Period 1



# Tracking Pathways



# Tracking Pathways



Then Do (Start)  
The Analysis

# The Analysis

- Pathways through PSE
  - What are they? – *including transfers, stop-outs, mature students, etc.*
- Then get in analytical framework
  - Relate to student and program characteristics & policy variables
  - Descriptive and regression/modelling set-up
- Associated labour market outcomes



Been There,  
Done That (in Part)

## Research Paper

**Culture, Tourism and the Centre for Education Statistics**

# **Moving Through, Moving On: Persistence in Postsecondary Education in Atlantic Canada, Evidence from the PSIS**

by Ross Finnie and Theresa Qiu

Culture, Tourism and the Centre for Education Statistics Division  
Main Building, Room 2001, Ottawa, K1A 0T6

Telephone: 1-800-307-3382

Fax: 1-613-951-9040



Statistics  
Canada

Statistique  
Canada

Canada



© Can Stock Photo - csp1402701

# How Student Pathways Affect Labour Market Outcomes: Evidence from Tax-Linked Administrative Data

Ross Finnie ([rfinnie@uottawa.ca](mailto:rfinnie@uottawa.ca))

